



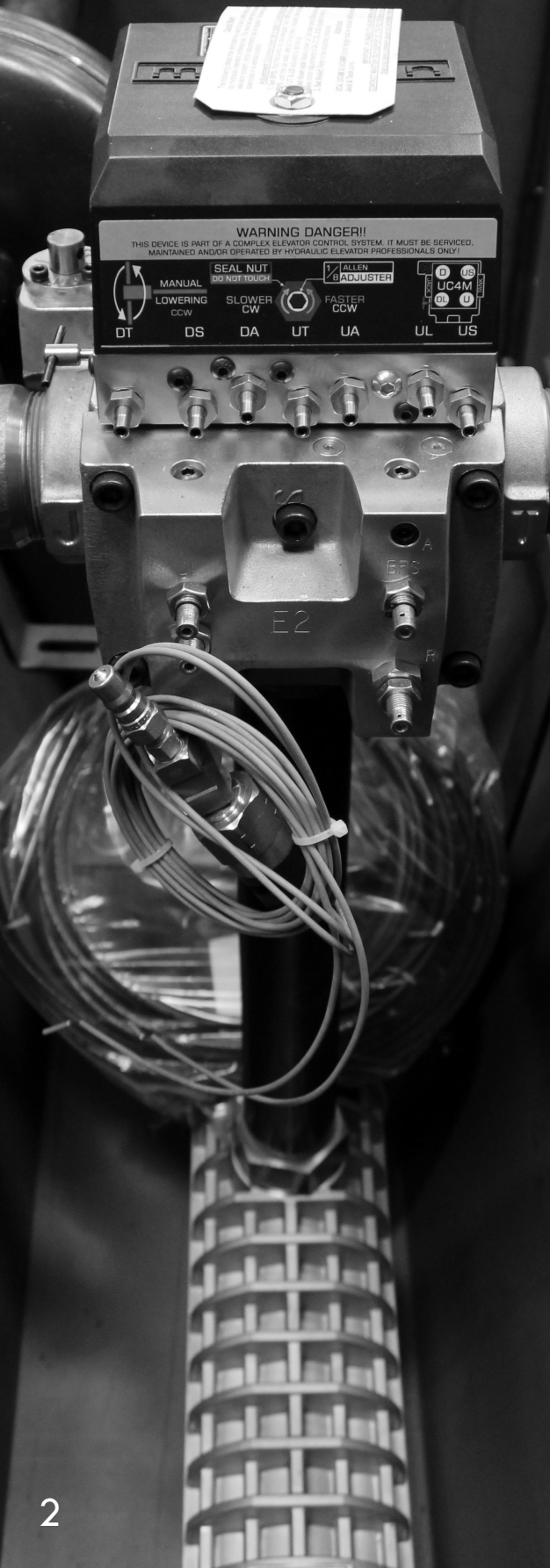
ELEVATING EQUIPMENT

LULA Planning Guide



DEM Elevating Equipment

DEM Elevating Equipment is a leading manufacturer and supplier of customized elevator packages and components tailored to the unique needs of its customers. Based in the Mid-Atlantic region, DEM EE is strategically positioned to serve the American Northeast. Yet, with a global footprint spanning four continents, DEM EE has a proven track record of delivering high-quality products worldwide, regardless of geographic location.

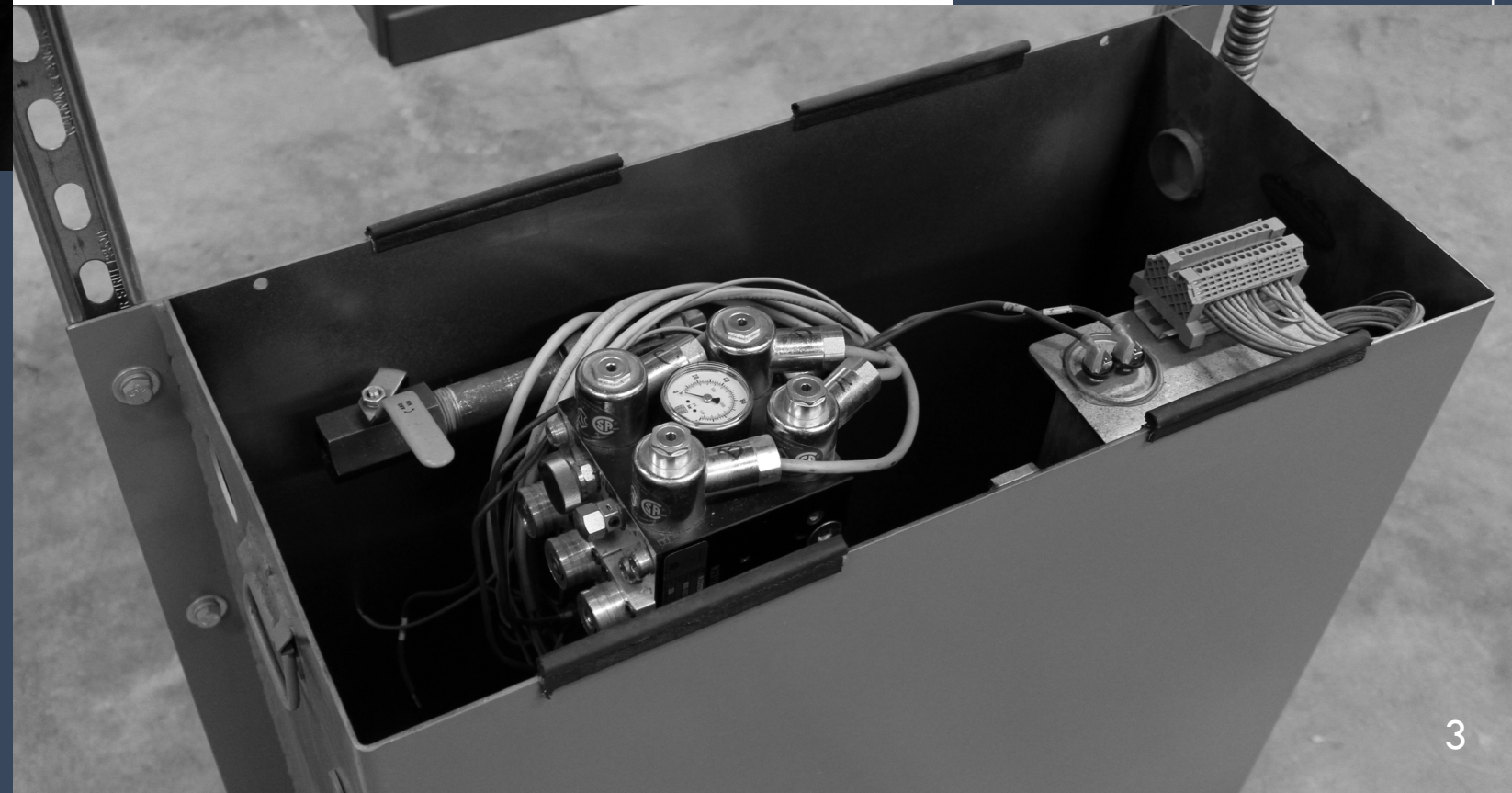
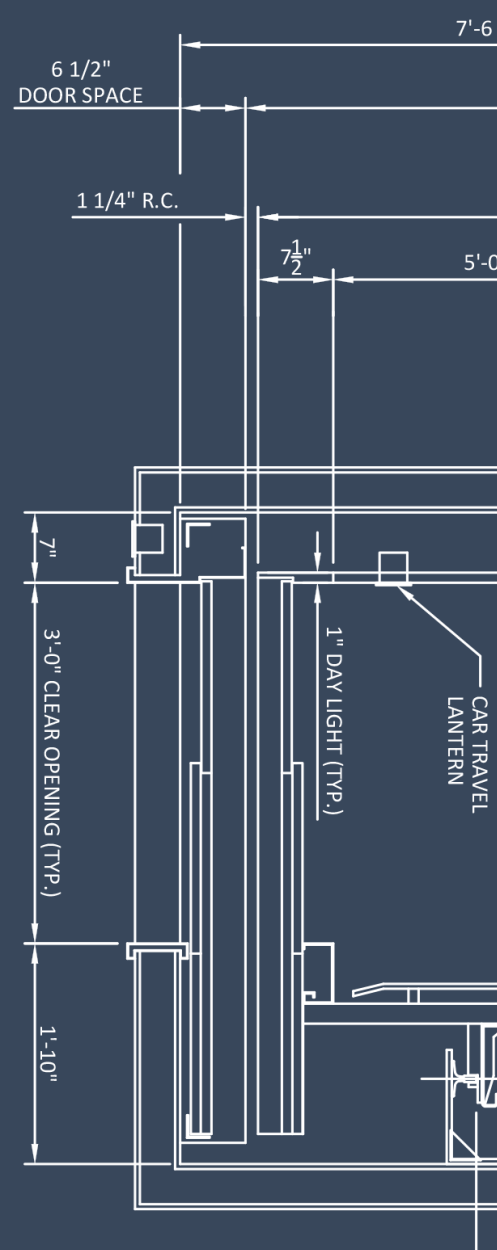


The Olympic LULA

The Olympic LULA (limited use/limited application) elevator system, proudly manufactured in the USA, provides the ideal solution for your commercial low-rise projects. Navigating the elevator planning process can be daunting, but our comprehensive guide is designed to assist you through each stage and help you select the optimal solution for your needs. When you choose DEM Elevating Equipment, you can be confident your elevator will not only stand the test of time, but also fully comply with all relevant code requirements.

Table Of Contents

- Page 4 Equipment Overview
- Page 5 Features
- Page 6 Cab Designs
- Page 7 Cab Types
- Page 8 Standard Layouts
- Page 12 Pit & Overhead
- Page 13 Machine Room & Electrical
- Page 14 Hoistway Electrical
- Page 15 Rail Wall
- Page 16 Entrance Details
- Page 18 Sill Details
- Page 19 Notes



Equipment Overview

The Olympic LULA utilizes a 2:1 roped hydraulic drive system powered by a 5HP submersible power unit. The specifications below are standard dimensions for the initial planning stages (prior to construction).

Capabilities

- Travel: Up to 25 ft.
- Stops: Up to 4 stops
- Capacity: 1400lb
- Speed: 30 FPM

Basic Requirements

- Typical Overhead New Construction: 11' - 2"
- Minimum Overhead Existing Building: 9' - 6"
- Minimum Pit Depth With Pit Prop Device: 14"
- Minimum Pit Depth Without Pit Prop Device: 42"
- Machine Room Within 50 ft

Roped Hydraulic Drive

- 2:1 Roped Hydraulic
- Motor: 5 HP submersible
- Valve: Blain EV100
- Power Supply Single Phase: 240VAC
- Power Supply Three Phase: 208VAC
- Power Supply Three Phase 460VAC (Available with Step Down Transformer)

Safety & Code Features

- Overspeed Valve
- Automatic Cab Lighting
- Emergency Cab Lighting
- Infrared Door Protection System
- Emergency Battery Lowering
- Oil Temperature Protection
- Phone Line Loss Protection (If Applicable)
- Keyed Emergency Stop Switch And Alarm Button
- Braille Tags
- Fire Service Phase 1



Optional Features

Recognizing that projects vary, the Olympic LULA system is available in custom dimensions to fulfill your unique vision. Our LULA can be modified to accommodate non-standard hoistways or incorporate custom cab finishes, ensuring it meets your specific needs.

- Custom Car Sizes
- Additional Travel and Floor Stops
- Custom Width Entrance Frames
- Direct Hydraulic Drive in Lieu of 2:1 Roped Hydraulic
- Wide Variety of Laminate Options
- #4 Brushed Stainless Steel Cab and Canopy
- #4 Brushed Stainless Steel Cab Inlay
- Position Indicators in Hallway Call Stations
- Protection Pads and Hooks
- Non-Slip Rubber Mat Flooring
- Exhaust fan in Ceiling
- #4 Brushed Bronze Cab Metal Finishes
- #4 Brushed Bronze Faceplate/Button Finishes
- Car Travel Lantern with Audible Signal
- Drop Ceiling with LED Downlights
- LED Downlights Recessed in Canopy
- #4 Brushed Stainless Steel Hallway Entrances
- Keyed Hoistway Access at Upper and Lower Landing

Standard Features

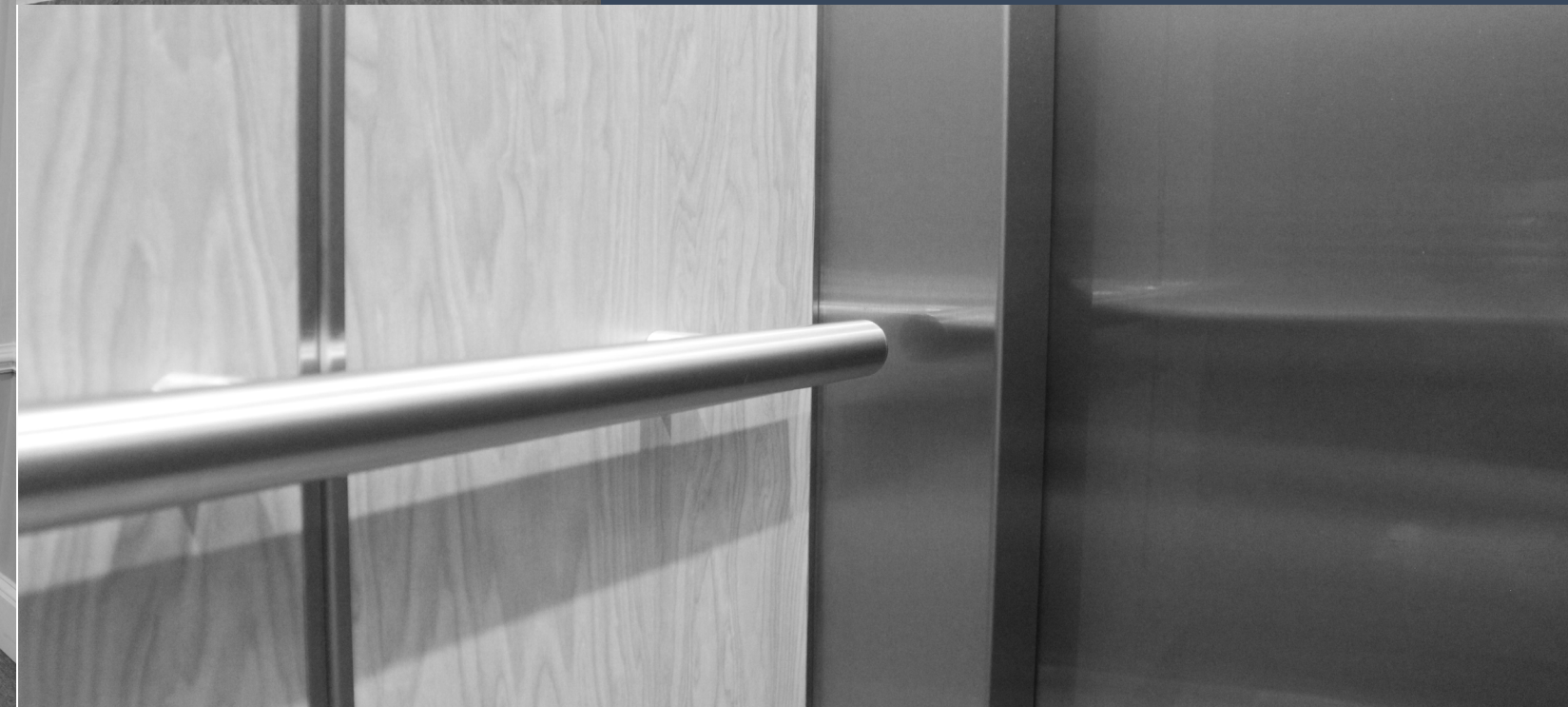
Our standard package includes everything you need to install your LULA package. Although we offer custom sizes and optional features, the following items are included in the standard Olympic LULA package.

Cab & Entrances

- Flush Laminated Shell Walls
- Painted Steel Canopy With Lexan Diffused Panels
- #4 Brushed Stainless Steel Handrail
- #4 Brushed Stainless Steel Entrance Frame
- #4 Brushed Stainless Steel 2 Speed Doors
- #4 Brushed Stainless Steel Car Operating Panel
- Aluminum Sill(s)
- Car Top inspection Station

Fixtures

- #4 Brushed Stainless Steel Hall Stations
- Digital Position Indicator with Directional Arrows in Car
- ADA Hands Free In-Car Telephone



Cab Designs

Laminated Panels
(Flush or Removable Panels)
Shown in Woodgrain Laminate



Laminated Panels
(Flush or Removable Panels)
Shown in White Laminate



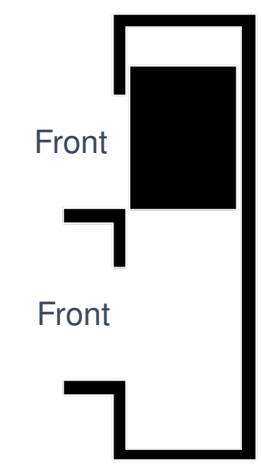
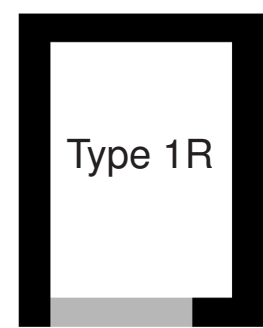
#4 Stainless Steel
(Painted Shell Available as well)



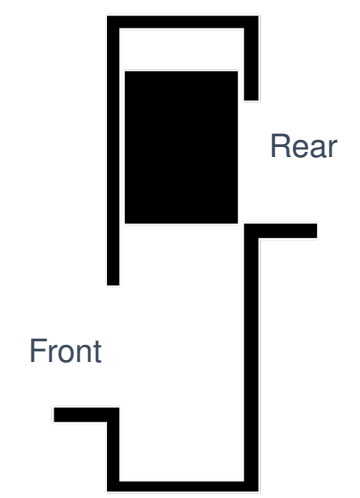
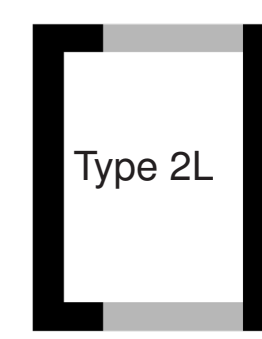
Cab Types

The Olympic LULA system is offered in a multitude of sizes and opening options to suit the vertical transportation needs of your project.

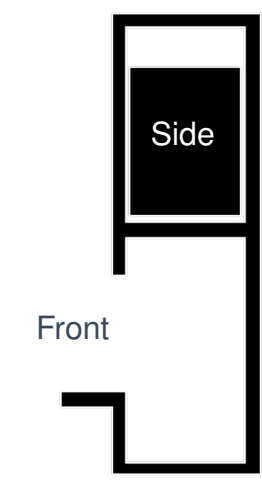
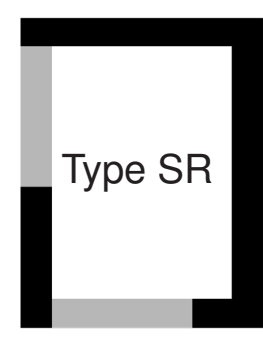
Front Opening

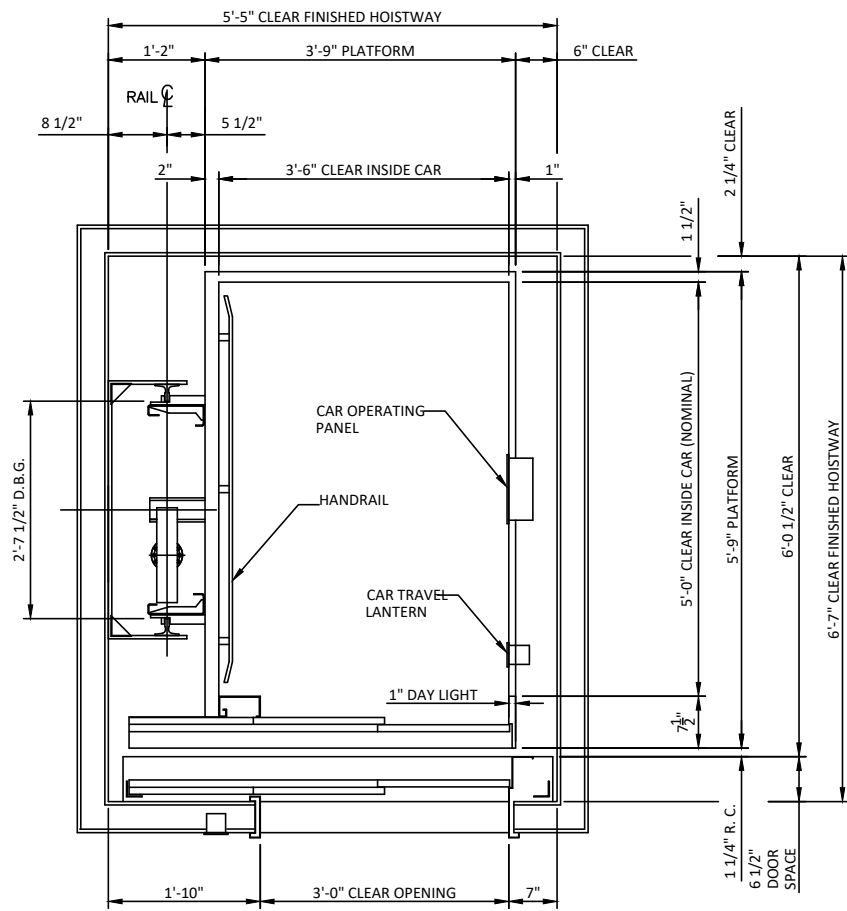


Front & Rear Opening

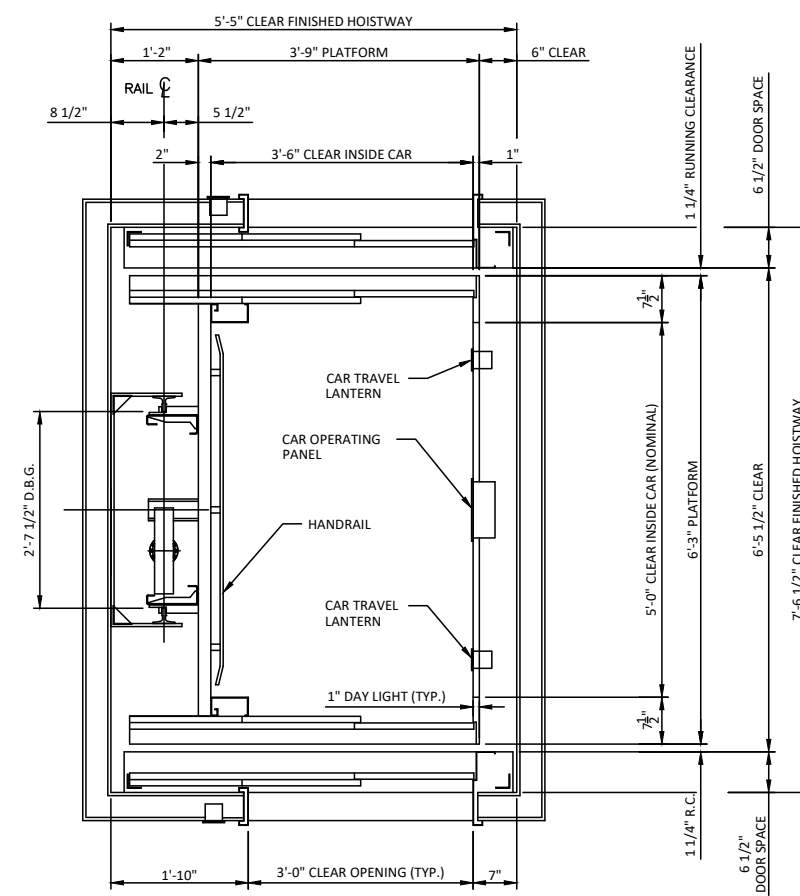


Front & Side Opening

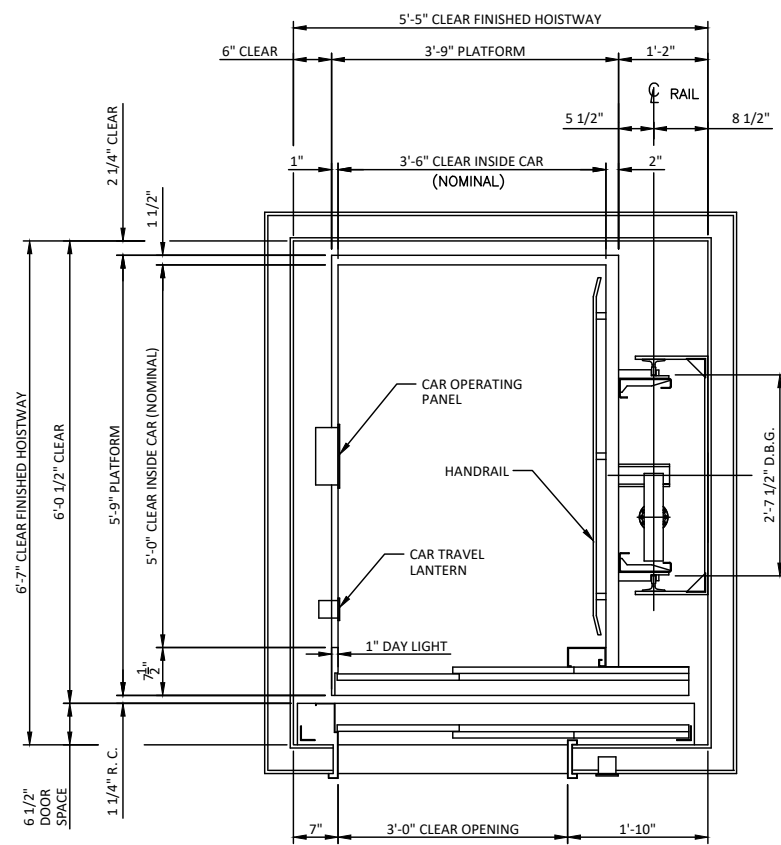




42" X 60" 1L

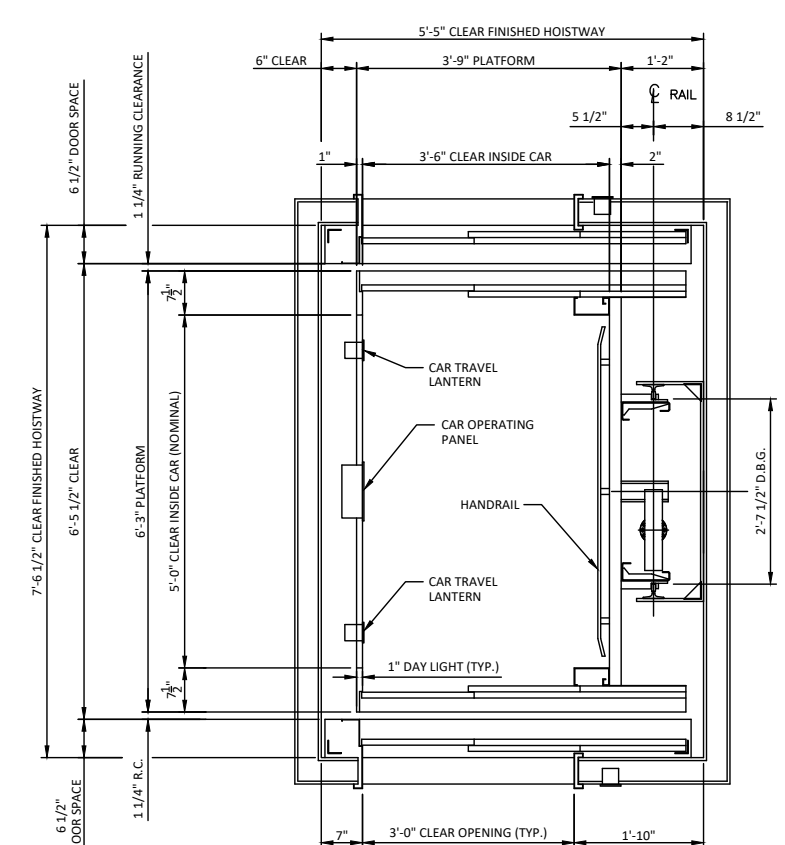


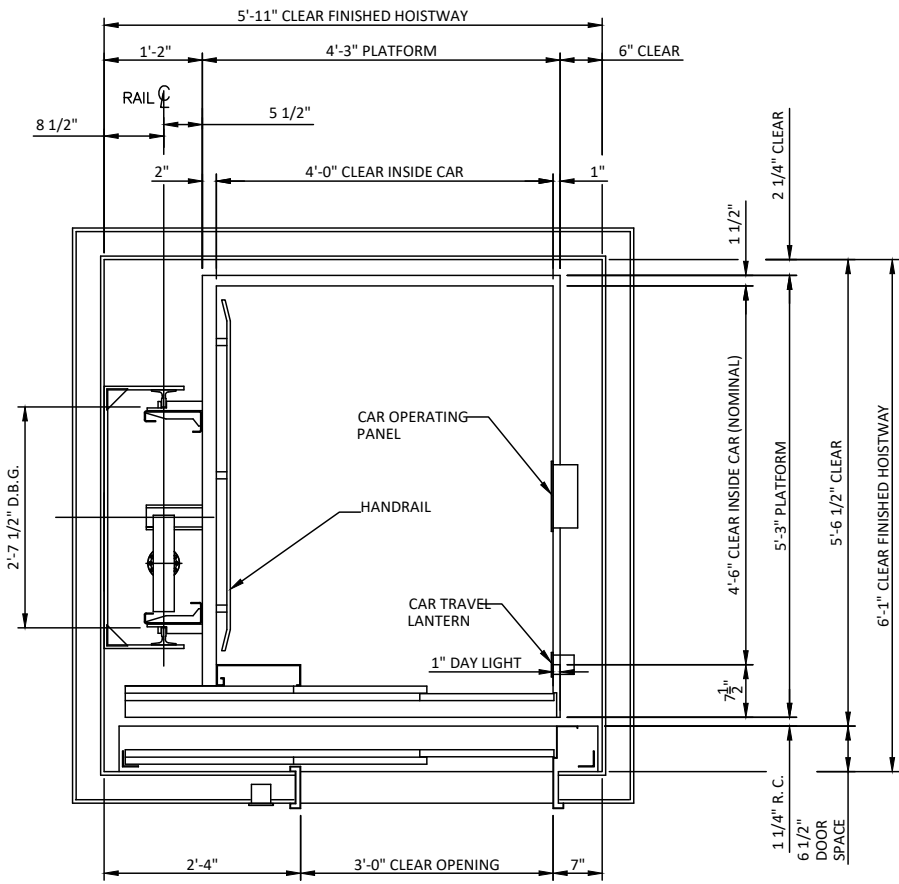
42" X 60" 2L



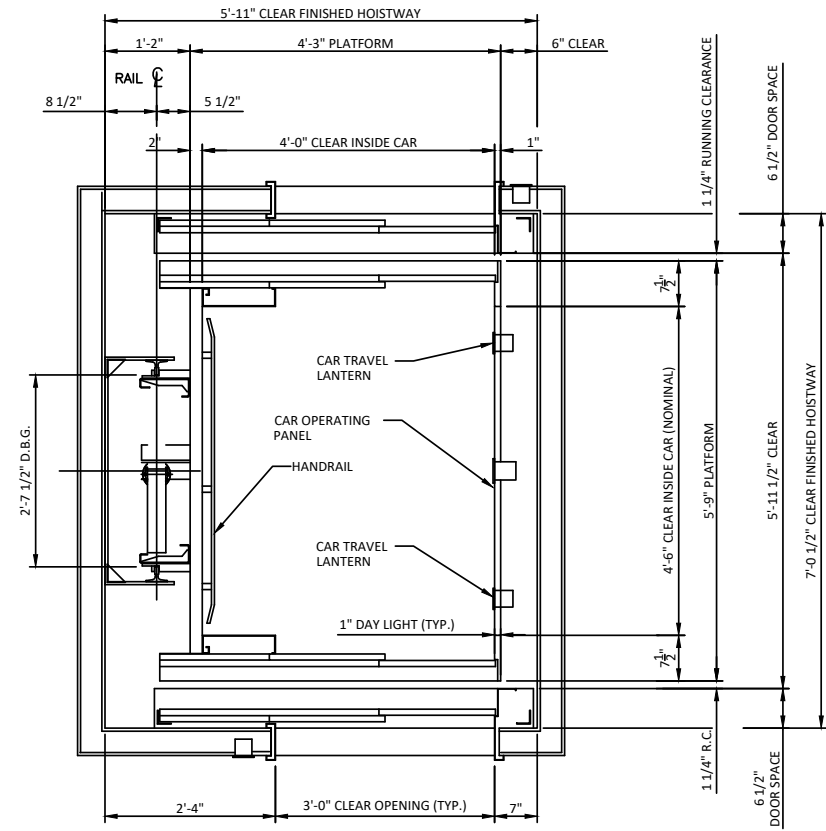
42" X 60" 1R

42" X 60" 2R



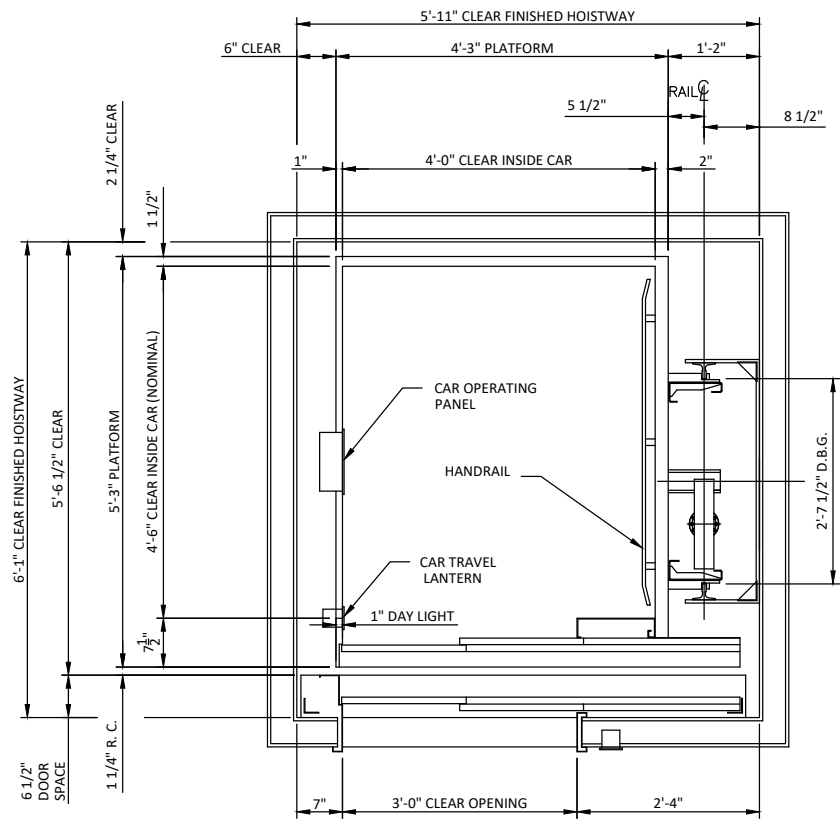


48" X 54" 1L

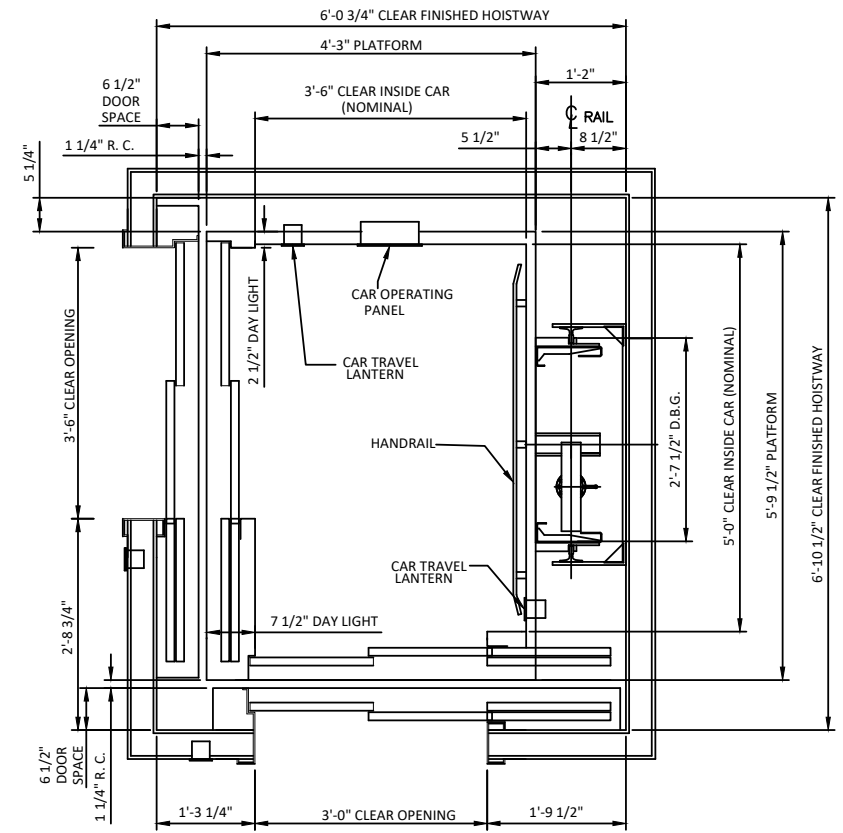


48" X 54" 2L

48" X 54" 1R



51" X 60" SR



Machine Room & Electrical

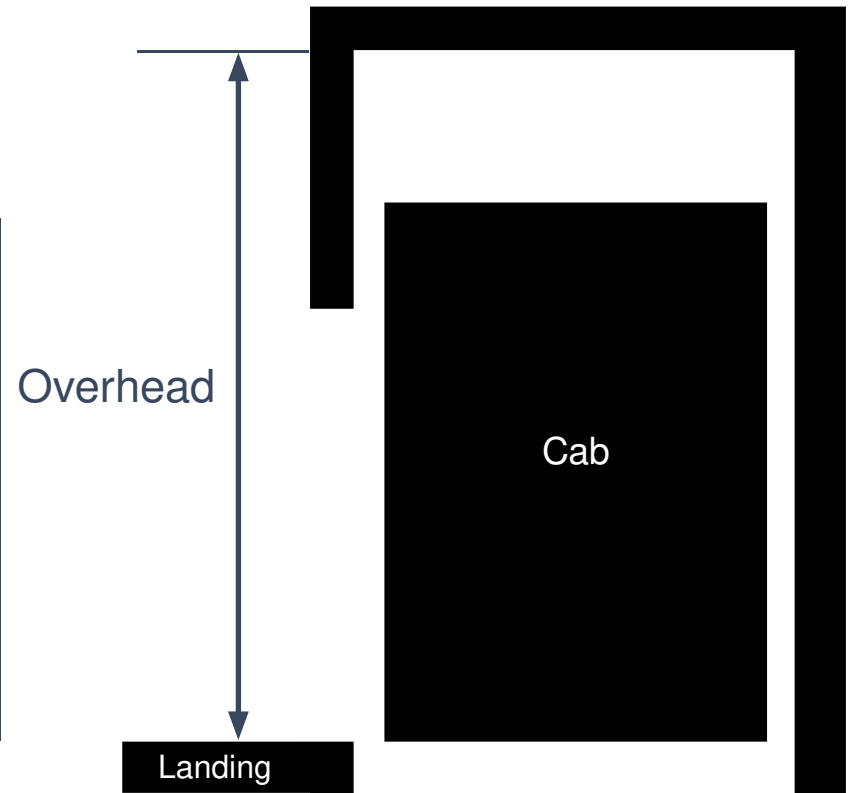
Pit & Overhead

Overhead

The Overhead is the distance from the floor of the top landing to the top of the hoistway.

Requirements

New Construction: 11' - 2"
 Existing Building: 9' - 6"
 Lower Overhead achievable with a cartop prop.

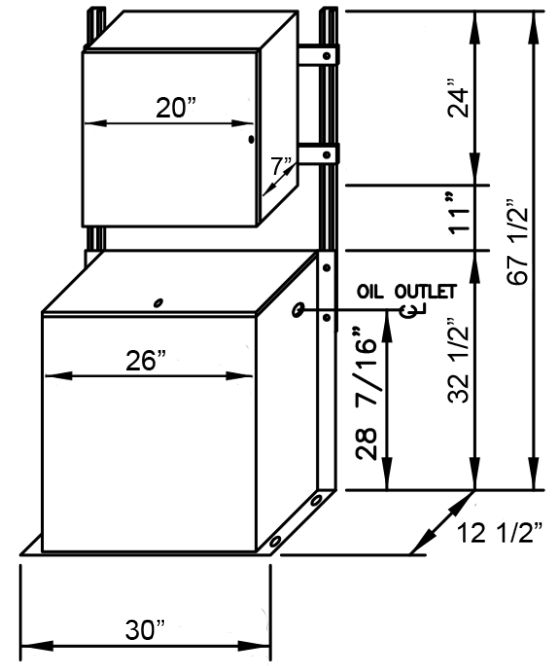
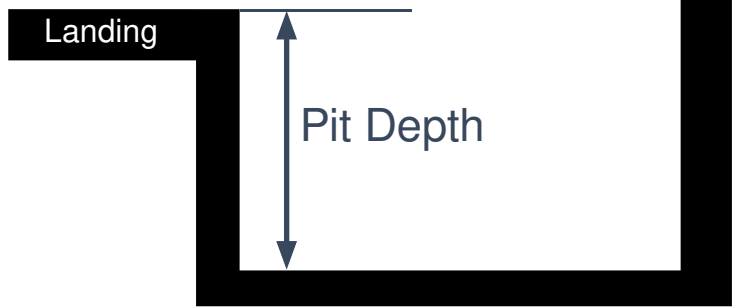


Pit Depth

The Pit Depth is the space below the elevator cab from the lowest landing to the bottom of the hoistway.

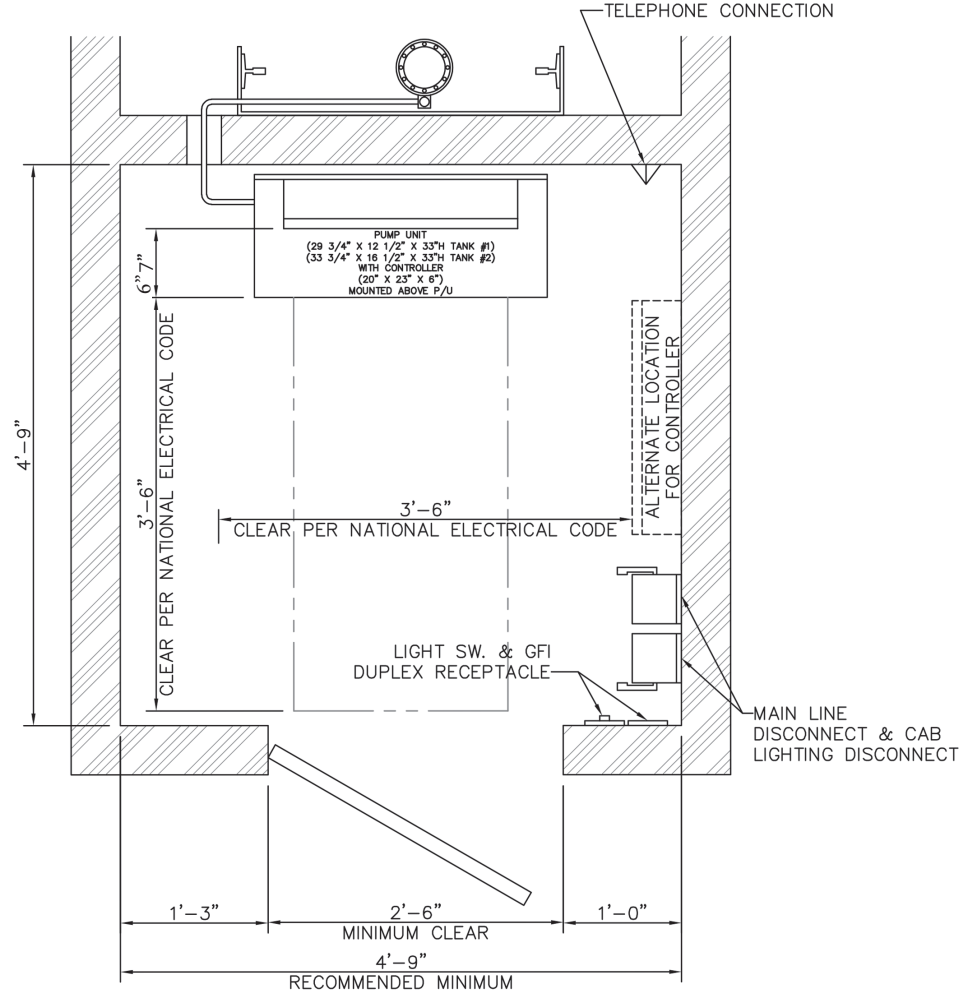
Requirements

With Pit Prop Device: 14"
 Without Pit Prop Device: 42"



Controller Tank Specifications

Minimum Required Clearance in Front	39"
Valve and Manual Lowering Handle location	Inside Tank
Rupture Valve	Included
Tank to Controller Wiring	Quick Connect
Controller Layout	PCB
Keyed Lock to Tank	Yes
Tank Capacity	15 Gal
Max Dry Weight	147 lbs
Max Filled Weight	312 lbs
Operating Environment	50°F - 80°F



*The information in this document is not an exhaustive list. Local code should be reviewed.

Machine Room & Hoistway Electrical Notes

The machine room must be built in accordance to applicable building codes and regulation. This includes adequate ventilation to maintain a temperature between 50°- 80°F (3600BTU per Hour).

Two 3" sleeves are required to connect machine room to elevator hoistway.

The machine room door must be self-closing and self-locking.

A light switch must be located within 18" of the machine room door.

The machine room is required to be free of all pipes and obstructions that are not required for the elevator's operation.

The machine room lighting must be a minimum of 19 foot candles at working surface. The lighting must be protected to prevent damage or contact with a hot bulb.

Per NEC code, a 30" X 36" clear working space is required in front of the disconnect switches.

The pump and controller require a 39" clear working space.

The mainline disconnect must have an auxiliary normally open contact.

A power outlet should be located within 18" of the machine room door.

A lockable fused disconnect switch in the off position must be located within 18" of the machine room door (Fuse must be 35A 208V 3 phase or 60A 230/240V single phase)

A telephone circuit must be connected to a dedicated, non-switched, outside line or a 24 hour central exchange.

**The information above does not include all requirements. Local code should be reviewed.*

Hoistway Electrical

Sumps, sprinkler systems, smoke and heat detectors may be required at the top or bottom of the hoistway if required by local code.

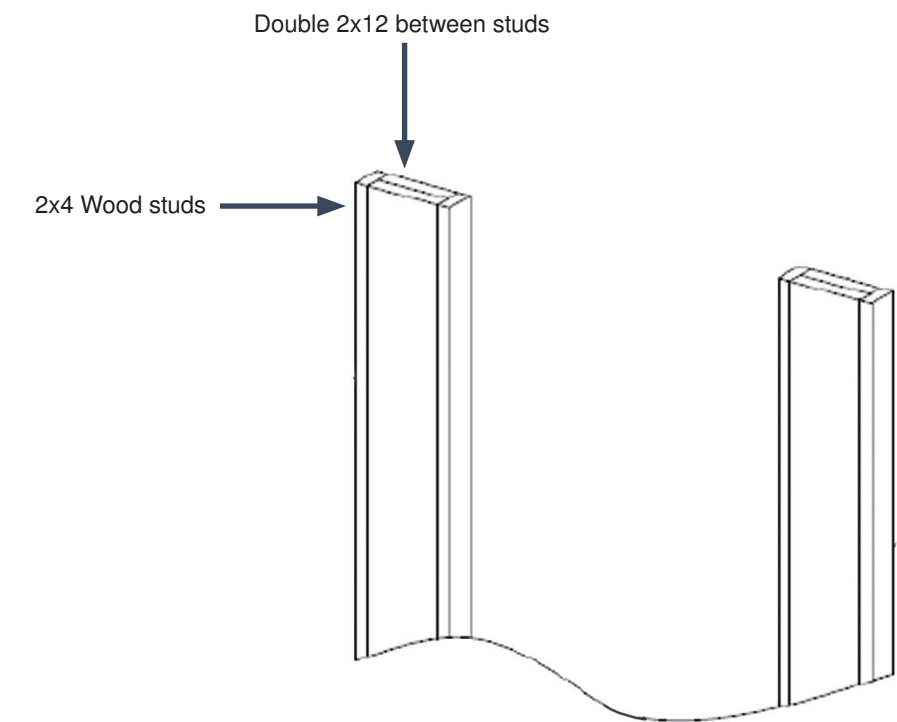
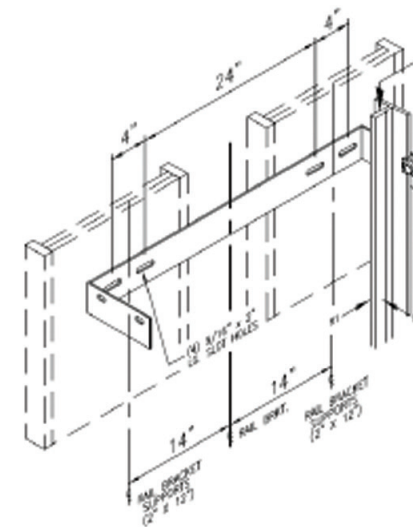
A protected light with a light switch accessible without entering the pit is required.

A GFCI service outlet must be installed in the pit.

Due to limited running clearances it is recommended that the electrical contractor provides feeds for these items, but not trim out these items until the elevator installation is complete.

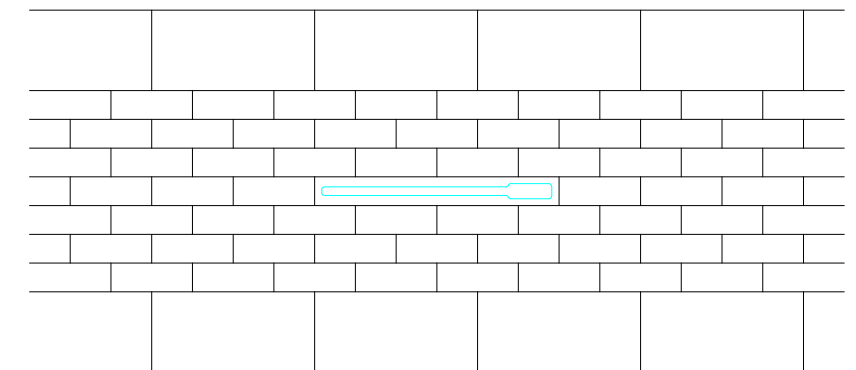
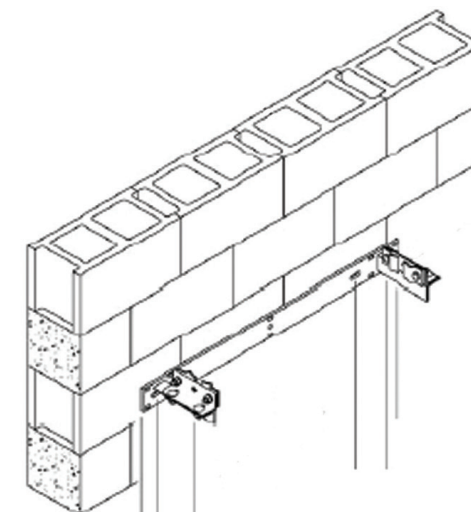
Rail Wall Information

Wood Framing



Concrete

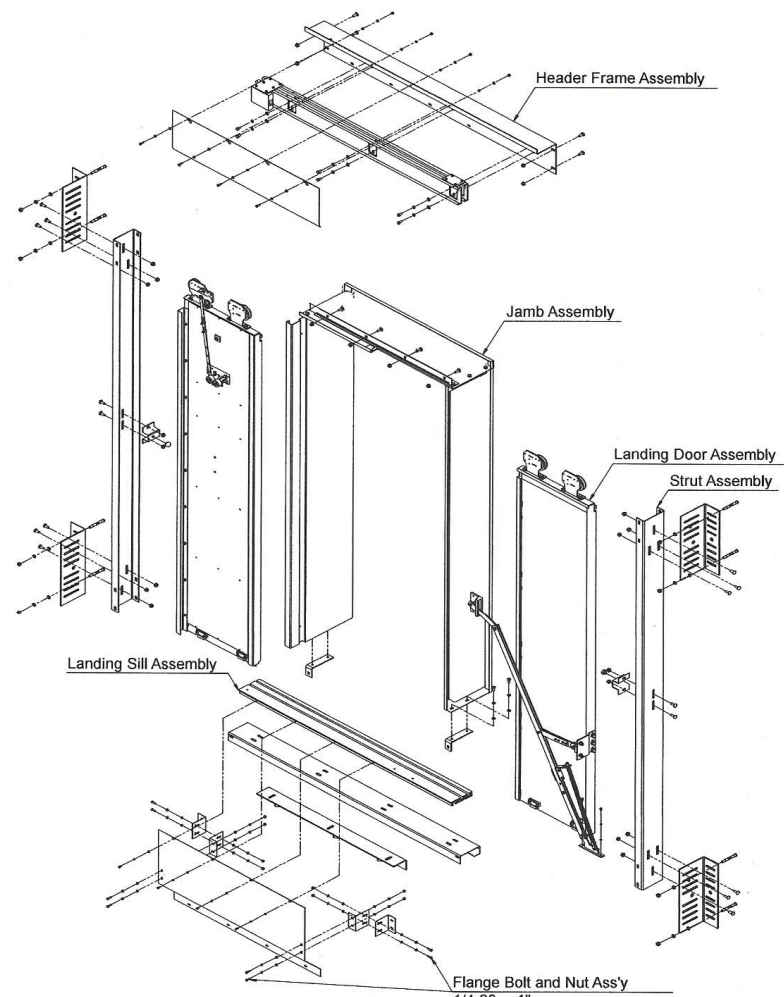
CMU cells should be filled. Preferred mounting utilizes wedge/sleeve anchors. Through-bolting is available when back side of load wall is accessible prior to finish.



RAIL BRACKET INSERT INSTALLATION DETAILS

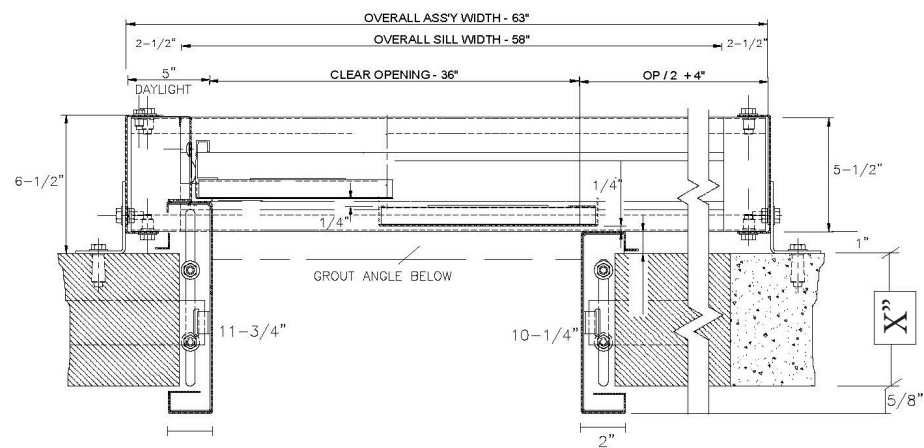
INSERT OCCURRING IN BLOCK WALL TO BE SET IN COURSES OF BRICK BY GEN. CONTR.

Entrance Details



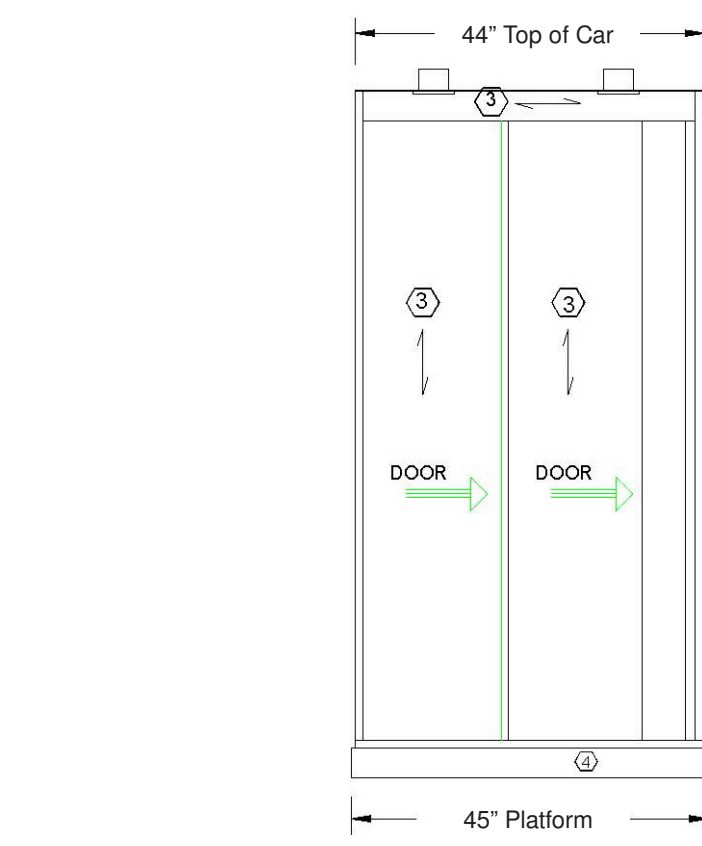
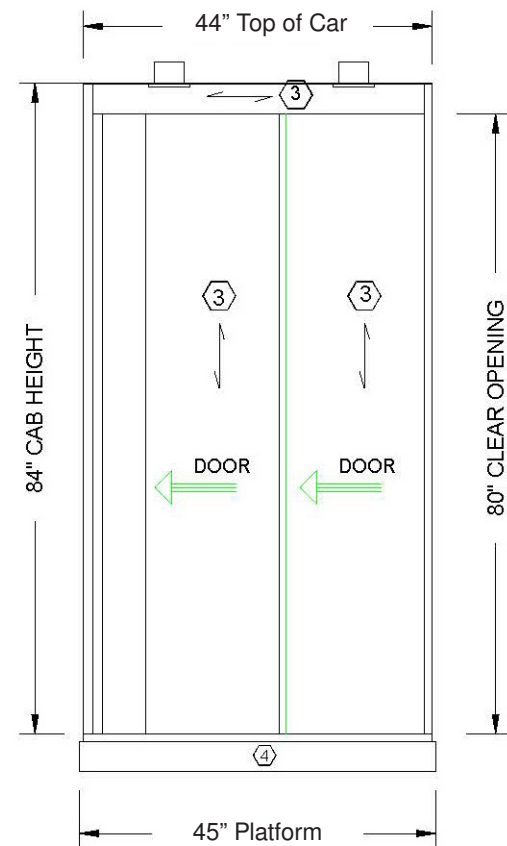
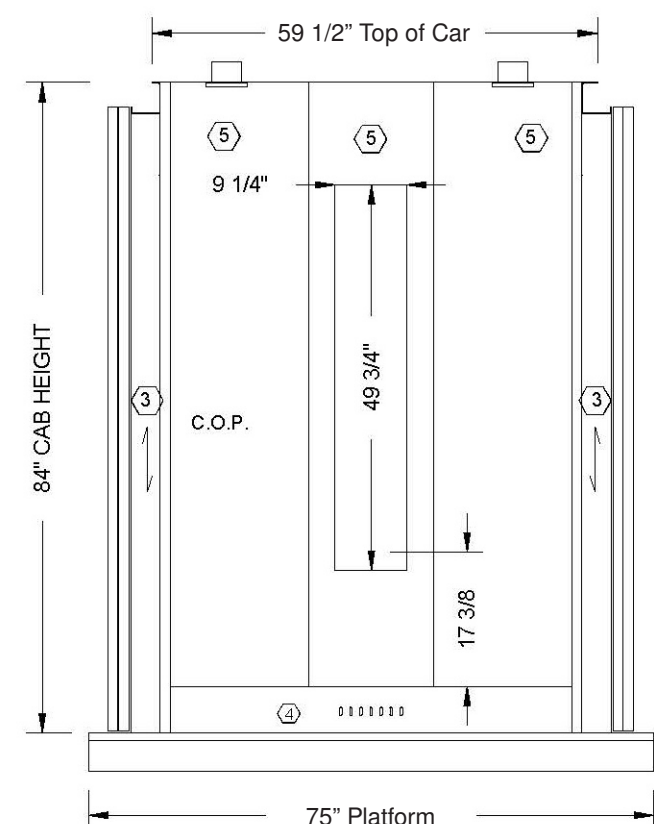
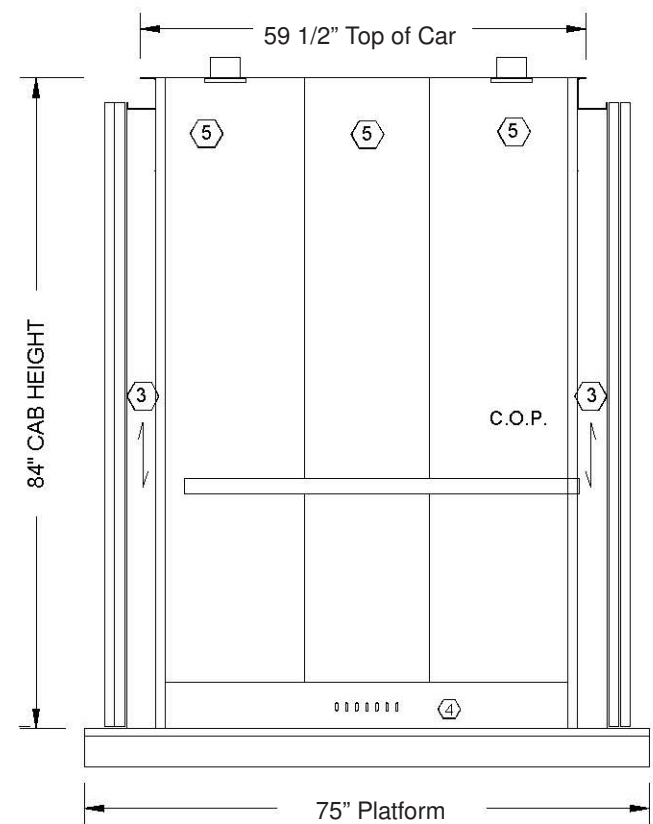
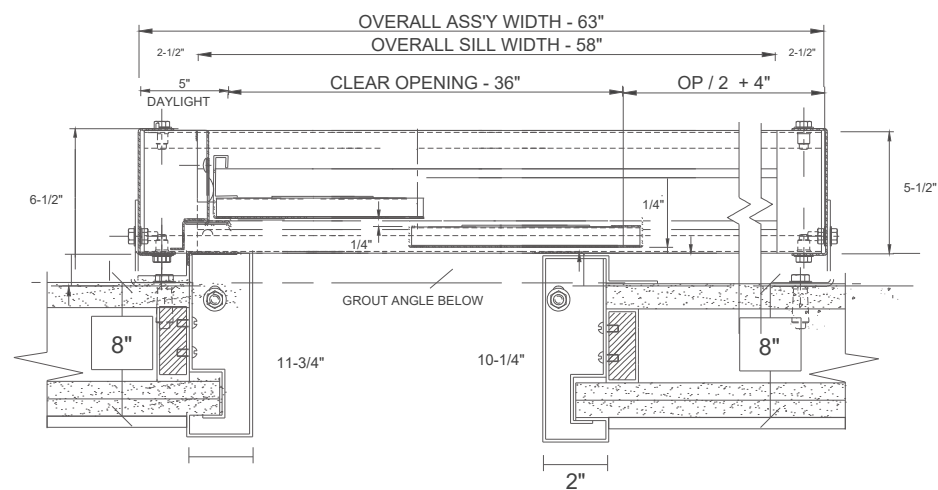
ENTRANCE PLAN VIEW

CONCRETE CONSTRUCTION



ENTRANCE PLAN VIEW

WOOD - FRAMED, DRYWALL CONSTRUCTION





27685 Rockawalkin Ridge Rd.
Salisbury, MD 21801

1-855-890-6603
ManufacturingSales@DEMElevating.com

www.DEMElevating.com

