

ELEVATING EQUIPMENT

Parts & Components Catalog



TABLE OF CONTENTS

BUILD YOUR POWER UNIT	4
COMPLETE PUMP UNITS	5
SUBMERSIBLE POWER UNITS	6
DRY POWER UNITS	7
POWER UNIT ACCESSORIES	8-9
PIPING ACCESSORIES	10-11
PIT EQUIPMENT	12
GUIDE RAIL COMPONENTS	13-15
SWITCHES	16
MISCELLANEOUS PARTS	17-18
CABS & ENTRANCES	19
ROLLER GUIDES	20
SLIDE GUIDES	21
MRL MACHINES	22-23
NOTES	24-27

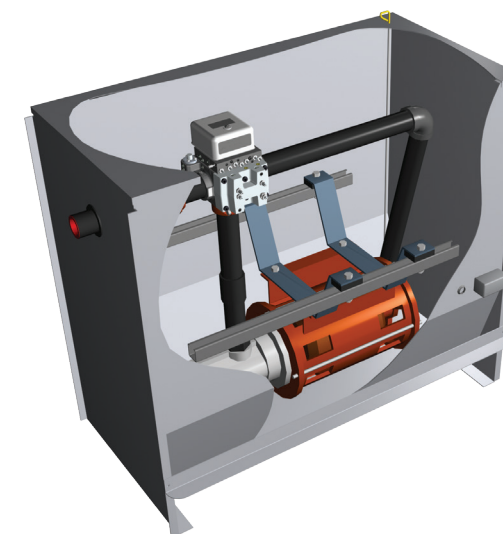


DEM Elevating Equipment is committed to providing our customers with high quality, accurate and complete products in a timely manner. Though our standard products are defined on the website and in our planning guide, DEM EE is highly capable of adapting our products to your non-standard and custom requirements. We can easily provide a custom package that fits our customers' needs. Our factory is conveniently located within the Mid-Atlantic region, giving us a great shipping and staging point for the East and Southeastern United States. DEM EE is exceptionally experienced with both government and municipal projects and can offer a variety of parts and components to make your next job seamless.

SUBMERSIBLE POWER UNITS

STANDARD EQUIPMENT

- Motors: 15-50HP
- Pumps: 24-253 GPM
- Maxton Valve (mounted inside of the tank)
- 12 ga Enamel Tank
- Isolated Feet Anchoring
- Noise Reducing Muffler
- Oil Level Dipstick
- Isolated Pump/ Motor Suspension for Easy Removal & Quiet Operation
- Standard Size: 51" x 42" x 22"



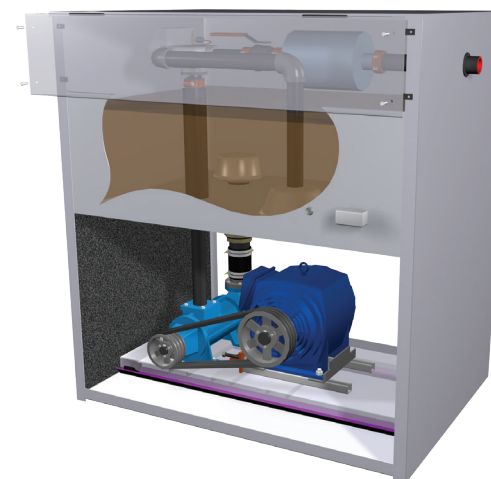
BUILD YOUR POWER UNIT

DEM ELEVATING EQUIPMENT MANUFACTURES STANDARD AND NON-STANDARD NON-PROPRIETARY DRY AND SUBMERSIBLE PUMP UNITS. OUR PUMP UNITS ARE BUILT BY CERTIFIED WELDERS TO SUIT THE NEEDS OF ANY PROJECT. CONTACT A DEM EE SALE REPRESENTATIVE TODAY TO LEARN MORE ABOUT THESE PRODUCTS AND OUR CUSTOMER PUMP UNIT CONFIGURATOR.

DRY POWER UNITS

STANDARD EQUIPMENT

- Motors: 15-100HP
- Pumps: 43-425 GPM
- Tandem Pumps/ Motors
- Maxton Valve (mounted in the tank)
- 12 ga Formed Tank & Body
- Effective Easy Belt Adjustment
- Noise Reducing Muffler
- Isolated Pump/ Motor Bedplate
- Shut Off Ball Valve
- Oil Level Sight Gauge



OPTIONAL FEATURES

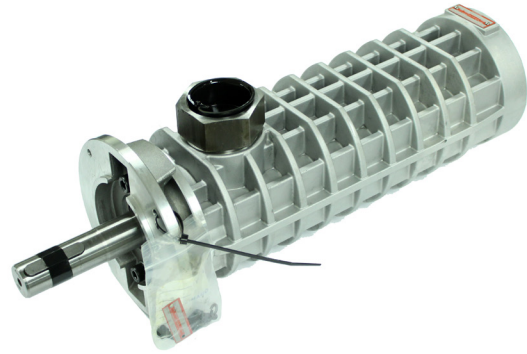
- Alternative Valve Options
- Constant Down Speed
- Custom Tank Sizes
- Low Pressure Switch
- Tank Heater
- Oil Cooler
- Oil Level Sight Gauge
- Shut Off Valve
- Oil Return Pump
- Single Phase Motor



100% BUILT IN THE U.S.A.

SUBMERSIBLE PUMPS

GPM	Pump Description	Part Number
24	P49	SP100
32	P36	SP101
38	P42	SP102
46	P46	SP103
50	187AJ	SP104
55	187Y	SP105
60	187P	SP106
65	187M	SP107
76	187	SP108
86	217Y	SP109
96	217P	SP110
104	217M	SP111
120	217	SP112
141	236G	SP113
160	236	SP114
185	236AS	SP115
200	276P	SP116
224	276G	SP117
253	276	SP118



DRY PUMPS

Max. GPM	Pump Description	Part Number
76	G3DB-187	DP100
124	G3DB-218	DP101
185	G3DB-250	DP102
208	G3DB-275	DP103
278	G3DB-312	DP104
360	G3DB-350	DP105
425	G3DB-400	DP106



DRY MOTORS

Horsepower	Phase	200/230 Vac	430/480 Vac
15	3	DM215	DM415
20	3	DM220	DM420
25	3	DM225	DM425
30	3	DM230	DM430
40	3	DM240	DM440
50	3	DM250	DM450
60	3	DM260	DM460
75	3	DM270	DM470
100	3	DM280	DM480

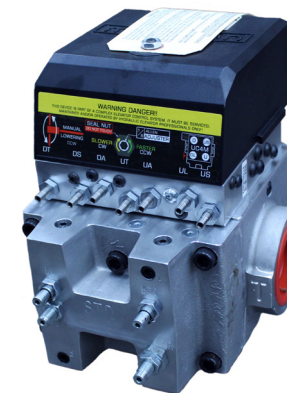
SUBMERSIBLE MOTORS

Horsepower	Phase	200/230 Vac	430/480 Vac
10	1	SM210	
15	3	SM215	SM415
20	3	SM220	SM420
25	3	SM225	SM425
30	3	SM230	SM430
40	3	SM240	SM440
50	3	SM250	SM450



MAXTON VALVES

Part Description	Connection Type	Part Number
UC4	2" Grooved	MV100
UC4M	2" Grooved	MV101
UC4MR	2" Grooved	MV102
UC4M-E1	2" Grooved	MV103
UC4M-E2	2" Grooved	MV104
UC1A	2.5" Grooved	MV105
UC2A	2.5" Grooved	MV106



220 VAC MOTORS

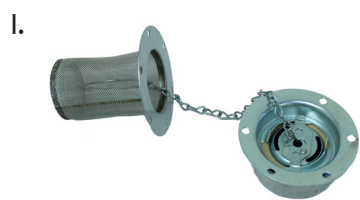
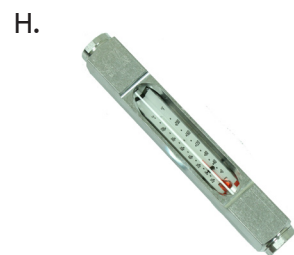
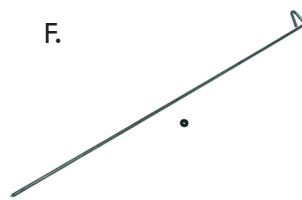
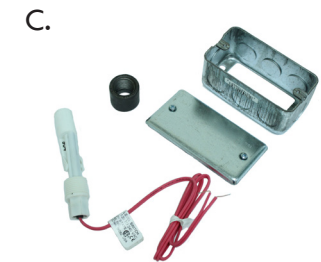
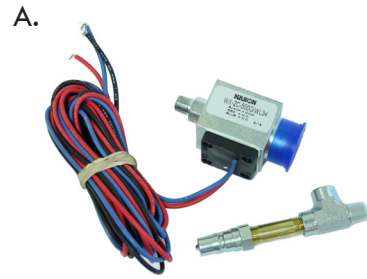
Horsepower	Phase	Part Number
3	1	SPSM100
7.5	1	SPSM101
10	1	SPSM102

POWER UNIT ACCESSORIES

Item	Part Number	Description
A	A100	Loadweigh (High Pressure) Switch (5A / 120-240V)
B	A101	Low Oil Switch (Switch Only) (1A / 120-240V)
C	A102	Low Oil Switch Assembly (1A / 120-240V)
D	A103	Low Pressure Switch (5A / 120-240V)
E	A104	Fluid Filled Pressure Gauge (1,000 PSI)
F	A105	Oil Dipstick
G	A106	Tank Heater (2.1A / 120V)
H	A107	Sight Gauge
I	A108	Vent Cap/Strainer
J	A109	Pit Flood Switch
K	A110	Rubber Isolation Feet (Non-Seismic)
L	A111	Rubber Isolation Feet (Seismic)

Item	Part Description	Inner Diameter	Part Number
M	Rubber Hose	2 1/2"	RH100
		3 1/2"	RH101
		4 1/2"	RH102

Available In Custom Lengths



SHUT OFF VALVES

Part Description	Pipe Size	Part Number:
Grooved Shut-off Valve	2"	SVG100
	2.5"	SVG101
	3"	SVG102
Threaded Shut-off Valve	2"	SVT100
	2.5"	SVT101
	3"	SVT102

BAFFEL TYPE MUFFLERS (LARGE)

Part Description	Inlet (in)	Connection Type	Part Number
Large Muffler	2"	Grooved	LQM100
	2.5"	Grooved	LQM101
	3"	Grooved	LQM102
Large Muffler	2"	Threaded	LQM103
	2 1/2"	Threaded	LQM104
	3"	Threaded	LQM105

BAFFEL TYPE MUFFLERS (SLIM)

Part Description	Pipe Size	Connection Type	Part Number
Slim Muffler	2"	Grooved	SQM100
	2 1/2"	Grooved	SQM101
	3"	Grooved	SQM102
Slim Muffler	2"	Threaded	SQM103
	2 1/2"	Threaded	SQM104
	3"	Threaded	SQM105

EXPANSION TYPE MUFFLER

Part Description	Pipe Size	Connection Type		Part Number
Expansion Muffler	2"	Grooved	x Threaded	EM100

GROOVED COUPLING



Part Description	Pipe Size	Connection Type	Part Number
Victulic 177N Flexible	2"	Grooved	VC100
	2 1/2"	Grooved	VC101
	3"	Grooved	VC102
Ridged Zero Flex	2"	Grooved	VC103
	2 1/2"	Grooved	VC104
	3"	Grooved	VC105

ISOLATION COUPLING



Part Description	Pipe Size	Connection Type	Part Number
Isolation Coupling	2"	Grooved	IC100
	2"	Threaded	IC101
	2 1/2"	Grooved	IC102
	3"	Grooved	IC103

90° VICTAULIC ELBOW



Part Description	Pipe Size	Part Number
Elbow	2"	E100
	2 1/2"	E101
	3"	E102

VICTAULIC T- CONNECTION



Part Description	Pipe Size	Part Number
T-Fitting	2"	TF100
	2 1/2"	TF101
	3"	TF102

STRAIGHT THREADED COUPLING



Part Description	Schedule	Pipe Size	Part Number
Straight Coupling	40	2"	TU100
		2 1/2"	TU101
		3"	TU102
Straight Coupling	80	2"	TU103
		2 1/2"	TU104
		3"	TU105

WYE STRAINER



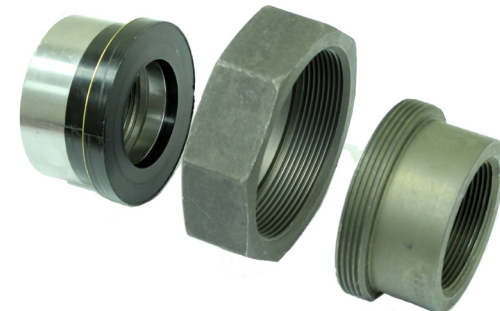
Part Description	Pipe Size	Connection Type	Part Number
Wye Strainer	2"	Threaded	YS100
	2 1/2"	Threaded	YS101
	3"	Threaded	YS102

DIELECTRIC COUPLING



Part Description	Pipe Size	Connection Type	Part Number
Dielectric Coupling	2"	Threaded	DC100
	2 1/2"	Threaded	DC101
	3"	Threaded	DC102

STRAIGHT UNION



Part Description	Pipe Size	Connection Type	Part Number
Straight Union	2"	Threaded	SU100
	2 1/2"	Threaded	SU101
	3"	Threaded	SU102



PIT LADDER

These fully adjustable pit ladders meet ASME A17.1-1996-2013 and OSHA compliance codes, range from 4' to 12' and available in 9", 12" and, 16" widths.



OIL BUFFERS

Part Description	Rated Speed	Part Number
ZOB51	200 FPM	Z100
ZOB52	300 FPM	Z101
ZOB53	350 FPM	Z102
ZOB54	400 FPM	Z103
ZOB55	500 FPM	Z104

TOE GUARDS

Part Description	Size	Part Number
Toe Guard	24 x 48	TG100
Toe Guard	24 x 60	TG101
Toe Guard	48 x 48	TG102
Toe Guard	48 x 60	TG103

Custom Sizes Available

BUFFER SPRING ASSEMBLY

* Custom sizes available

PIPE STANDS

Part Description	Part Number
12" Pipe Stand	PS100
24" Pipe Stand	PS101

PIT CHANNELS

Part Description	Part Number
6" x 60"	PC100
8" x 60"	PC101

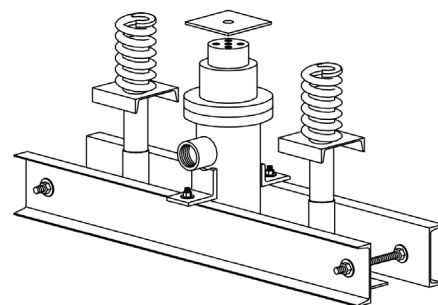
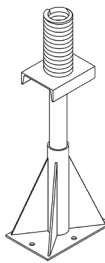
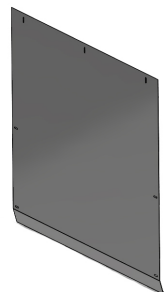
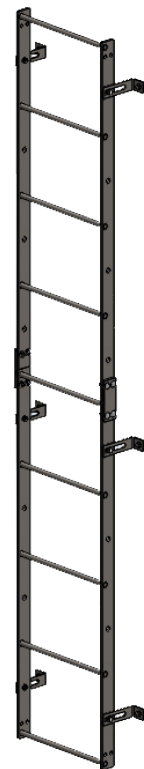
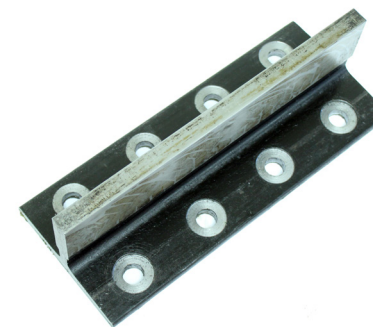
*Custom Sizes Available

GUIDE RAILS

Part Description	Length	Part Number
8 Lb	16'	R108
12 LB	16'	R112
15 LB	16'	R115
18 LB	16'	R118
22 Lb	16'	R122
30 Lb	16'	R130

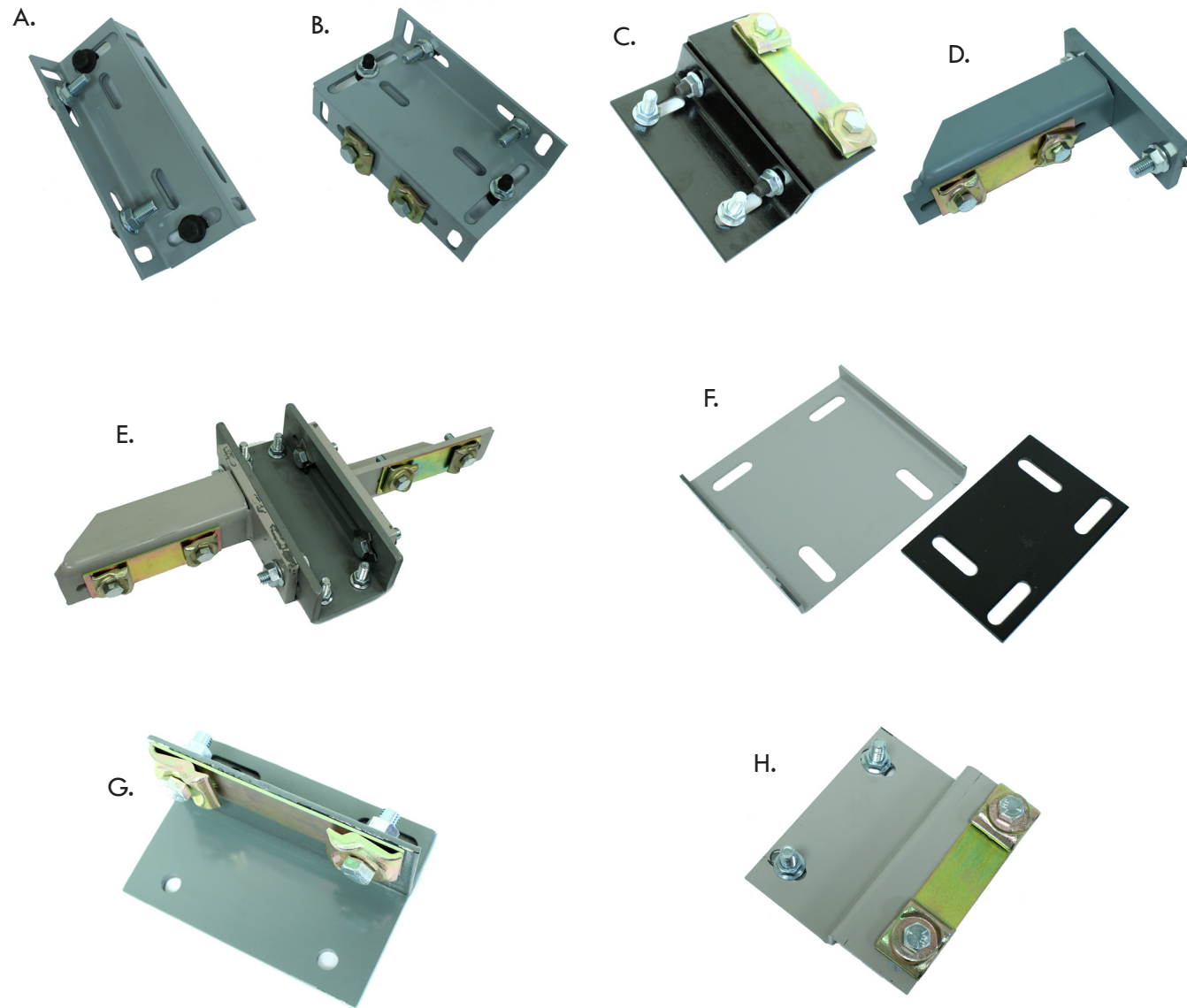
GUIDE RAIL FISH PLATES

Part Description	Rail Size	Part Number
Standard Fish Plate	8	FP100
	12 & 15	FP101
	18	FP102
	22	FP103
T-Type Fish Plate	8	FP104
	12 & 15	FP105
	18	FP106
	22	FP107
Triple Thick Fish Plate	8	FP108
	12 & 15	FP109
	18	FP110
	22	FP111
Low Profile Fish Plate	8	FP112
	12 & 15	FP113
	18	FP114
	22	FP115



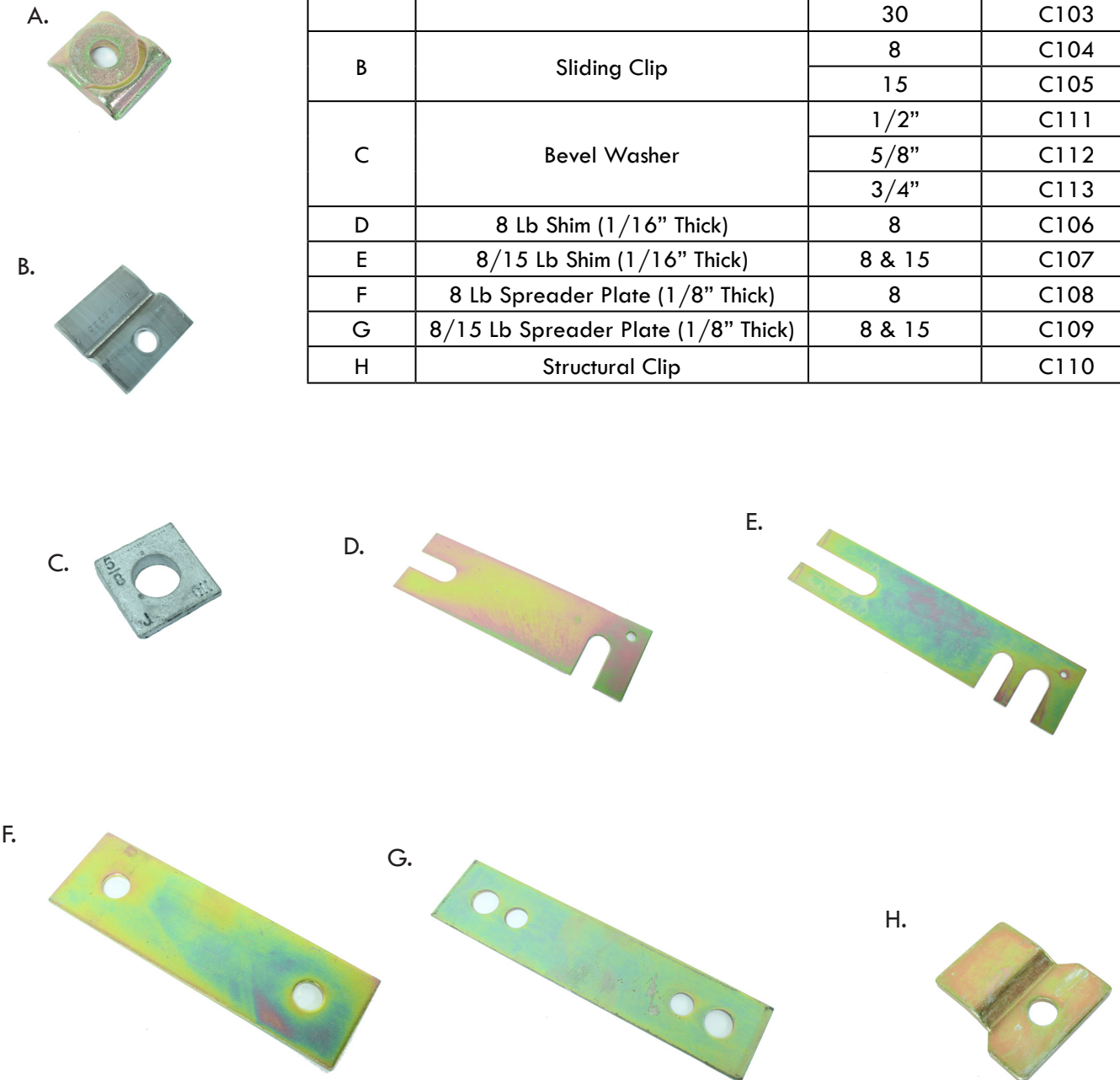
GUIDE RAIL COMPONENTS

Item Number	Part Description	Part Number
A	12" Wide Rail Bracket (Standard) 2 1/2" - 6 7/8"	B100
B	12" Wide Rail Bracket (Large) 2 1/2" - 10 7/8"	B101
C	9" Wide Rail Bracket 3" - 5 3/4"	B102
D	Counter Weight rail bracket 8 Lb	B103
E	Duplex w/ Counter Weight Bracket	B104
F	Extension Plate	B105
G	Rail Mount Pit Plate	B106
H	Non Adjustable 1 7/8" Z bracket W/ Shim	B107



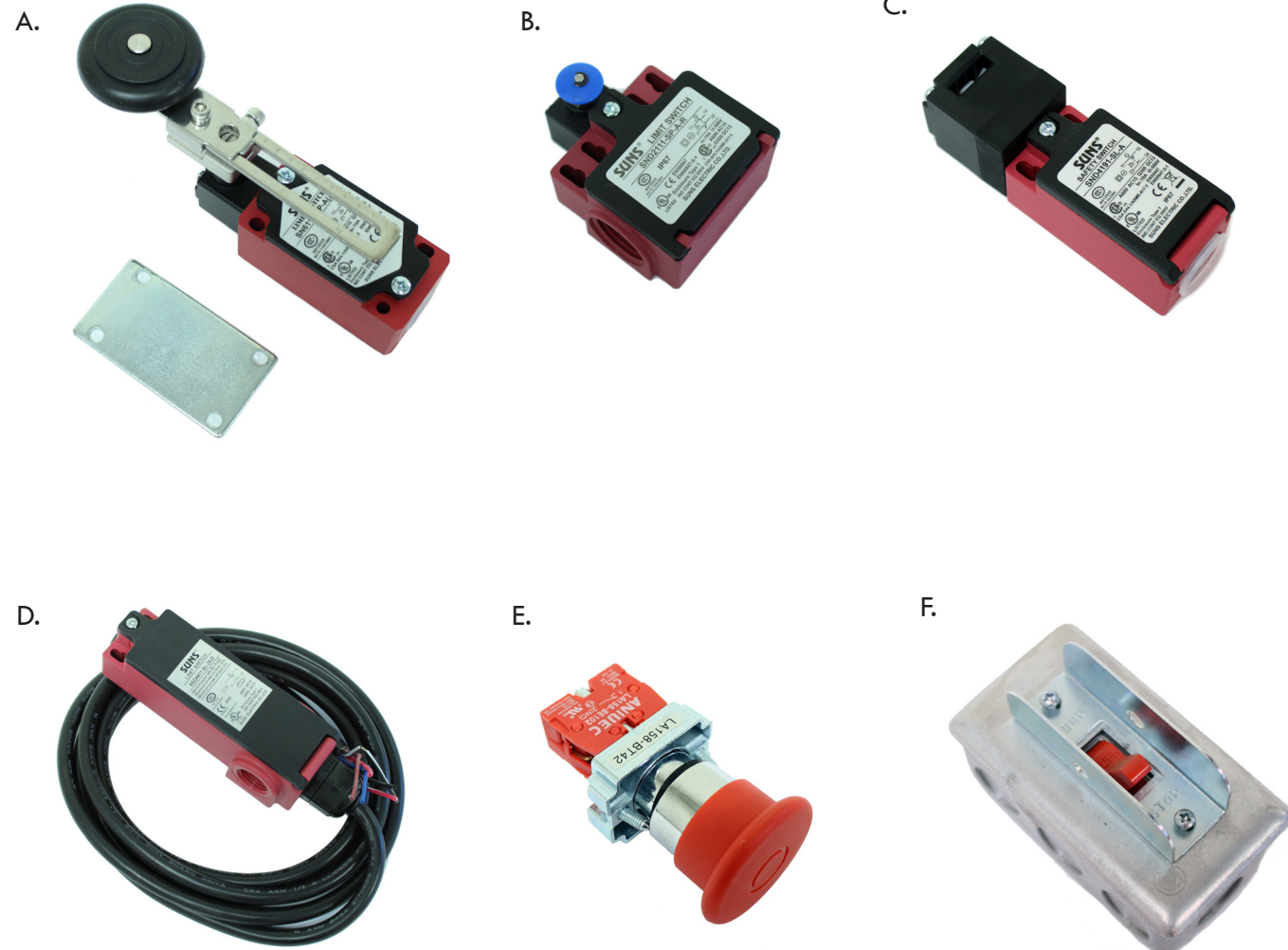
GUIDE RAIL CLIPS

Item	Part Description	Rail Size (Lb)	Part Number
A	Forged Clip	8	C100
		15	C101
		22	C102
		30	C103
B	Sliding Clip	8	C104
		15	C105
C	Bevel Washer	1/2"	C111
		5/8"	C112
		3/4"	C113
D	8 Lb Shim (1/16" Thick)	8	C106
E	8/15 Lb Shim (1/16" Thick)	8 & 15	C107
F	8 Lb Spreader Plate (1/8" Thick)	8	C108
G	8/15 Lb Spreader Plate (1/8" Thick)	8 & 15	C109
H	Structural Clip		C110



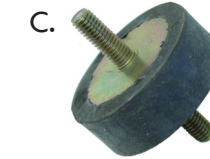
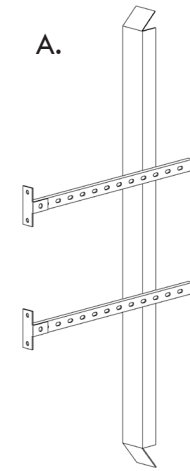
SWITCHES

Item	Part Description	Rated Current	Part Number
A	Limit Switch	10A / 600V	SW100
B	Gov/Pit Switch	10A / 600V	SW102
C	Comp. Chain Switch W/Hardware	10A / 600V	SW103
D	Remote Reset Switch	10A / 600V	SW104
E	Car Top Switch	10A / 600V	SW105
F	120VAC Pit Switch	15A / 600V	SW106



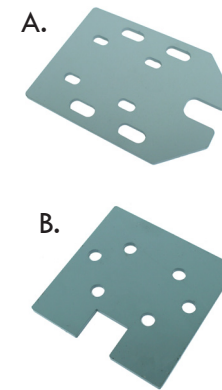
MISC. PARTS

Item	Part Description	Part Number
A	5' Cam w/ Brackets and Hardware	MS100
	10' Cam w/ Brackets and Hardware	MS101
B	Shackle Spring	MS105
C	3/8" Rubber Isolation Stud (Compressive Use Only)	MS106
D	1/2" Rubber Isolation Stud (Compressive Use Only)	MS107
	Rubber Isolation Strip	MS108



SEISMIC RETAINER PLATES

Item	Part Description	Matching Guide	Part Number
A	Seismic Retainer Plate	Elpro 36SRG	SRP100
		Elpro 816SS	SRP101
		Elsco Model A	SRP102
B	Seismic Retainer Plate	Elpro 803	SRP103
		Elsco Model D	SRP104



Additional Models Available

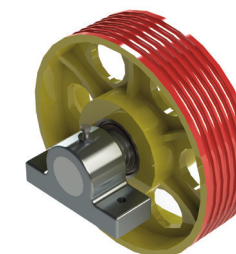
GOVERNORS

Part Description	Max Car Speed	Part Number
LK-315	350 FPM	G100
Hollister 207RS	500 FPM	G101

SHEAVES

Part Description	Part Number
13.375" x 7 x 8mm	S100
15.75" x 6 x 10mm	S101
13.75" x 4 x 8mm	S102

Available With 8" or 12" Shafts



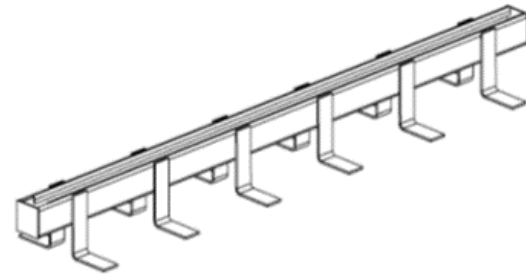
SHACKLES

Part Description	Length	Part Number
8mm Shackle	12"	MS100
	18"	MS101
10mm Shackle	12"	MS102
	18"	MS103
	24"	MS104
5/8" Shackle	12"	MS105
	18"	MS106
Shackle Spring		MS107



WALL INSERTS

Our wall inserts are secured to the wall by a 1/8 thick 1-inch wide steel foot bent at a 90 deg angle. The feet are welded every six inches on the body of the 12-gauge formed steel channel with welded end caps. Our wall insert is primer coated to protect it from corrosion in the field. (Shown in 36") Other sizes and configurations available upon request.



CUSTOM GUARDING & SHROUDING

Have a glass hoistway that needs some finishing touches? We can help! Send DEM EE your dimensions and we will fabricate what you need!

CABS & ENTRANCES

Along with our Group 1 components, we offer cabs and entrances. By choosing DEM EE, you can be sure that your creative vision will be achieved.



SUNDRIES KIT

Spending too much time at the hardware store and not enough time in the hoistway? That can be fixed with DEM EE's "Hardware Store in a box". This kit includes all of the miscellaneous hardware required in the field.



LULA PIT PROPS

DEM EE now produces LULA Pit Props that ship complete and ready to install.



CARTOP RAILING

The DEM EE Cartop Safety System is one of the easiest safest systems to install in the elevator industry. Our cartop safety system provides the elevator mechanic with a safe working environment while installing, maintaining, and modernizing the job. Because our rail system is practically preassembled, the Installation time is less than 45 minutes. All hardware, brackets, and toe kicks are provided for easy installation. You provide us with the inside width and depth of the car, and we take care of the rest!



ROLLER GUIDES

Part Number	Product Description	Roller Diameter	Roller Material	Rail Size	Replacement Wheel	Replacement Wheel
RG100	Elpro 36SRG	5 3/4"	Neoprene	15-18 Lb.	36SRGW	RW100
RG101	Elpro 36SRGU	5 3/4"	Urethane	15-18 Lb.	36SRGWU	RW101
RG102	Elpro 803RG	3 1/4"	Neoprene	8-15 Lb.	803RGW	RW102
RG103	Elpro 803RGU	3 1/4"	Urethane	8-15 Lb.	803RGWU	RW103
RG104	Elpro 815RG	5 3/4"	Neoprene	12-15 Lb.	815RGW	RW104
RG105	Elpro 815RGU	5 3/4"	Urethane	12-15 Lb.	815RGWU	RW105
RG106	Elsco Model A	6"	Neoprene	15-30 Lb.	EA18359	RW106
RG107	Elsco Model B	6"	Neoprene	15-30 Lb.	EA18359	RW106
RG108	Elsco Model C	3 1/4"	Neoprene	15-30 Lb.	EC18405	RW107
RG109	Elsco Model D	3 1/4"	Neoprene	15-30 Lb.	EC18405	RW107

PASSENGER SLIDE GUIDES

Part Number	Product Description	Rail Size	Guide Material	Rigid/Swivel	Guide Placement
PG100	Elpro 8ST	8-15 Lb.	UHMW	Rigid	Stile
PG101	Elpro 8SO	8-15 Lb.	UHMW	Rigid	On Top of Car
PG102	Elpro 815DS	8-15 Lb.	UHMW	Double Swivel	On Top of Car
PG103	Elpro 816DS	8-15 Lb.	UHMW	Double Swivel	On Top of Car
PG104	Elpro 815SS	8-15 Lb.	UHMW	Single Swivel	On Top of Car
PG105	Elpro 816SS	8-15 Lb.	UHMW	Single Swivel	On Top of Car
PG106	Elsco SA-15	8-15 Lb.	Moly. Nylon	Single Swivel	On Top of Car
PG107	Elsco SA-8	8 Lb.	Moly. Nylon	Single Swivel	On Top of Car
PG108	Elsco SC-8	8 Lb.	Moly. Nylon	Single Swivel	On Top of Car
PG109	Elsco SD-8	8 Lb.	Moly. Nylon	Single Swivel	On Top of Car

ROLLER GUIDE WHEELS



Part Number	Product Description	Roller Diameter	Roller Material
RW100	36SRGW	5 3/4"	Neoprene
RW101	36SRGWU	5 3/4"	Urethane
RW102	803RGW	3 1/4"	Neoprene
RW103	803RGWU	3 1/4"	Urethane
RW104	815RGW	5 3/4"	Neoprene
RW105	815RGWU	5 3/4"	Urethane
RW106	EA18359	6"	Neoprene
RW107	EC18405	3 1/4"	Neoprene

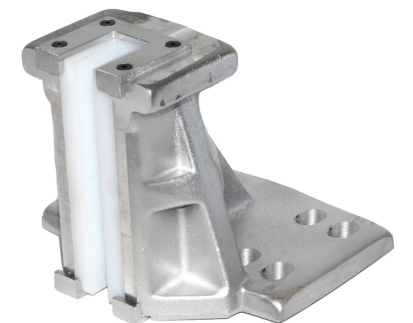
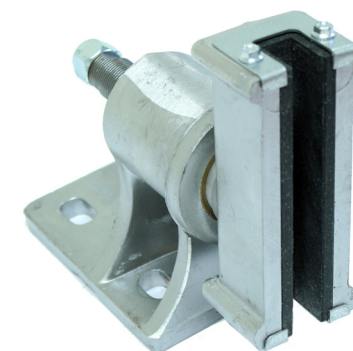
FREIGHT SLIDE GUIDES

Part Number	Product Description	Rail Size	Guide Material	Rigid/Swivel	Guide Placement
FRG100	Elpro 16FR	15 Lb.	UHMW	Rigid	On Top of Car
FRG101	Elpro 16SS	15 Lb.	UHMW	Single Swivel	On Top of Car
FRG102	Elpro 16ST	15 Lb.	UHMW	Rigid	Stile
FRG103	Elpro 18FR	18 Lb.	UHMW	Rigid	On Top of Car
FRG104	Elpro 18SS	18 Lb.	UHMW	Single Swivel	On Top of Car
FRG105	Elpro 18ST	18 Lb.	UHMW	Rigid	Stile
FRG106	Elpro 22FR	22 Lb.	UHMW	Rigid	On Top of Car
FRG107	Elpro 22SS	22 Lb.	UHMW	Single Swivel	On Top of Car
FRG108	Elpro 22ST	22 Lb.	UHMW	Rigid	Stile
FRG109	Elpro 30FR	30 Lb.	UHMW	Rigid	On Top of Car
FRG110	Elpro 30SS	30 Lb.	UHMW	Single Swivel	On Top of Car
FRG111	Elpro 30ST	30 Lb.	UHMW	Rigid	Stile

ELPRO ROLLER GUIDE STUD ASSEMBLY



Part Number	Product Description
SA100	815RGSA
SA101	803RGSA



TPM1
8MM ROPE

SHEAVE SHAFT LOAD 6587 LBS
SHEAVE GROOVES UP TO 4X8MM ROPES
ESTIMATED WEIGHT 660LBS

GEARLESS
MACHINE

NORMAL BRAKE
PICK/HOLD VOLTAGE: 90/45 VDC
PICK/HOLD CURRENT:1.20/0.6 A
EMERGENCY BRAKE
PICK/HOLD VOLTAGE: 90/45 VDC
PICK/HOLD CURRENT:1.2/0.6 A



Model Number	Capacity (lbs)	Speed (FPM)	Motor Rating (HP)	Poles	Rated RPM	Rated Voltage (V _{AC})	Rated Frequency (Hz)	Rated Current (A)	Rated Torque (ft-lbs)	Max Acceleration Torque (ft-lbs)	CWT (%)	Sheave Diameter (in.)
TPM1-2515-HV/LV	2500	150	6.7	20	86	290/145	14.3	13.5/26.5	410	820	50	13.39

TPM3
8MM ROPE

SHEAVE SHAFT LOAD 7568 LBS
SHEAVE GROOVES UP TO 7X8MM ROPES
ESTIMATED WEIGHT 1045LBS

GEARLESS
MACHINE

NORMAL BRAKE
PICK/HOLD VOLTAGE: 90/45 VDC
PICK/HOLD CURRENT:1.08/0.55 A
EMERGENCY BRAKE
PICK/HOLD VOLTAGE: 90/45 VDC
PICK/HOLD CURRENT:1.08/0.55 A



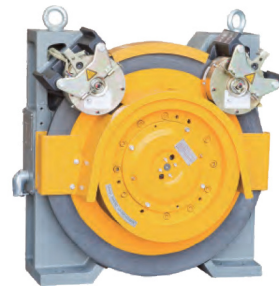
Model Number	Capacity (lbs)	Speed (FPM)	Motor Rating (HP)	Poles	Rated RPM	Rated Voltage (V _{AC})	Rated Frequency (Hz)	Rated Current (A)	Rated Torque (ft-lbs)	Max Acceleration Torque (ft-lbs)	CWT (%)	Sheave Diameter (in.)
TPM3-3520-HV/LV	3500	200	12.6	20	112	328/160	18.7	20.3/42.8	590	1180	50	13.39
TPM3-3535-HV/LV	3500	350	22.3	20	198	328/160	33	35.2/70.4	590	1180	50	13.39

TPM2
8MM ROPE

SHEAVE SHAFT LOAD 6587 LBS
SHEAVE GROOVES UP TO 7X8MM ROPES
ESTIMATED WEIGHT 990 LBS

GEARLESS
MACHINE

NORMAL BRAKE
PICK/HOLD VOLTAGE: 90/45 VDC
PICK/HOLD CURRENT:0.87/0.45 A
EMERGENCY BRAKE
PICK/HOLD VOLTAGE: 90/45 VDC
PICK/HOLD CURRENT:0.87/0.45 A



Model Number	Capacity (lbs)	Speed (FPM)	Motor Rating (HP)	Poles	Rated RPM	Rated Voltage (V _{AC})	Rated Frequency (Hz)	Rated Current (A)	Rated Torque (ft-lbs)	Max Acceleration Torque (ft-lbs)	CWT (%)	Sheave Diameter (in.)	
TPM2-2520-HV/LV	8MM	2500	200	10.6	20	112	328/160	18.7	17.7/35.8	494	988	45	13.39
TPM2-2535-HV/LV	8MM	2500	350	18.7	20	198	328/160	33	30.4/61.5	494	988	45	13.39

TPM4
10MM ROPE

SHEAVE SHAFT LOAD 7568 LBS
SHEAVE GROOVES UP TO 6X10MM ROPES
ESTIMATED WEIGHT 1188LBS

GEARLESS
MACHINE

NORMAL BRAKE
PICK/HOLD VOLTAGE: 90/45 VDC
PICK/HOLD CURRENT:1.08/0.55 A
EMERGENCY BRAKE
PICK/HOLD VOLTAGE: 90/45 VDC
PICK/HOLD CURRENT:1.74/0.87 A



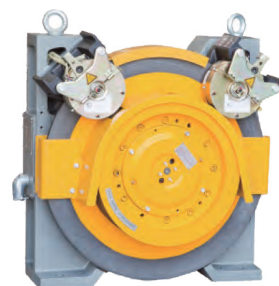
Model Number	Capacity (lbs)	Speed (FPM)	Motor Rating (HP)	Poles	Rated RPM	Rated Voltage (V _{AC})	Rated Frequency (Hz)	Rated Current (A)	Rated Torque (ft-lbs)	Max Acceleration Torque (ft-lbs)	CWT (%)	Sheave Diameter (in.)
TPM4-3520-HV/LV	3500	200	12.3	20	96	328/160	16	21.1/40	676	1352	50	15.75
TPM4-3535-HV/LV	3500	350	21.3	20	167	27.8	33	34/67	676	1352	50	15.75

TPM2
10MM ROPE

SHEAVE SHAFT LOAD 6587 LBS
SHEAVE GROOVES UP TO 6X10MM ROPES
ESTIMATED WEIGHT 1012 LBS

GEARLESS
MACHINE

NORMAL BRAKE
PICK/HOLD VOLTAGE: 90/45 VDC
PICK/HOLD CURRENT:1.08/0.55 A
EMERGENCY BRAKE
PICK/HOLD VOLTAGE: 90/45 VDC
PICK/HOLD CURRENT:1.08/0.55 A



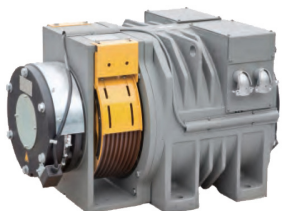
Model Number	Capacity (lbs)	Speed (FPM)	Motor Rating (HP)	Poles	Rated RPM	Rated Voltage (V _{AC})	Rated Frequency (Hz)	Rated Current (A)	Rated Torque (ft-lbs)	Max Acceleration Torque (ft-lbs)	CWT (%)	Sheave Diameter (in.)	
TPM2-2520-HV/LV	10MM	2500	200	9	20	96	328/160	16	15.7/30.6	494	988	50	15.75
TPM2-2535-HV/LV	10MM	2500	350	15.7	20	167	328/160	27.8	26.7/53.7	494	988	50	15.75

TSM
10MM ROPE

SHEAVE SHAFT LOAD 12817 LBS
SHEAVE GROOVES UP TO 8X10MM ROPES
ESTIMATED WEIGHT 2090LBS

GEARLESS
MACHINE

NORMAL BRAKE
PICK/HOLD VOLTAGE: 90/45 VDC
PICK/HOLD CURRENT:2.05/1.00 A
EMERGENCY BRAKE
PICK/HOLD VOLTAGE: 90/45 VDC
PICK/HOLD CURRENT:2.05/1.00 A



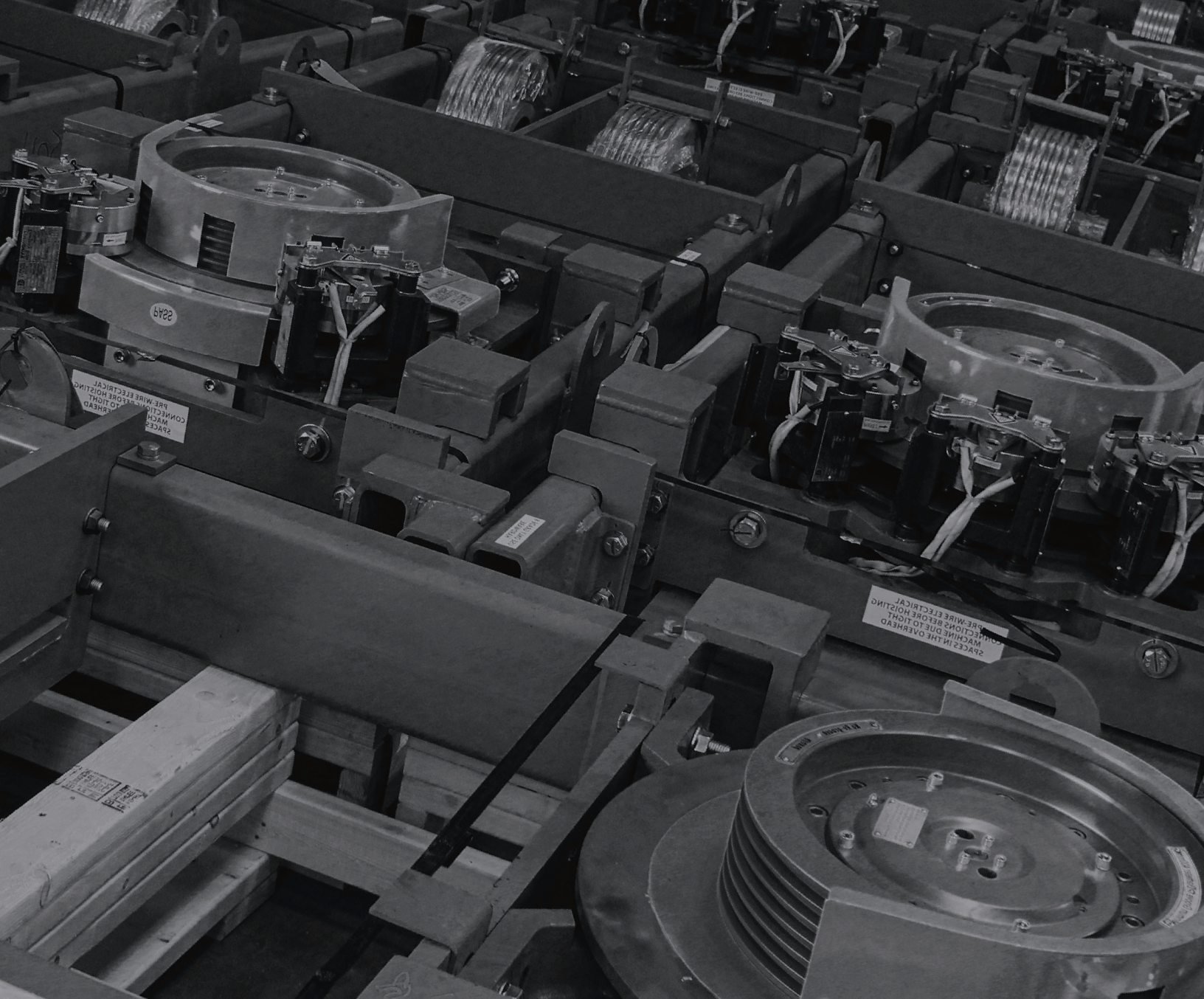
Model Number	Capacity (lbs)	Speed (FPM)	Motor Rating (HP)	Poles	Rated RPM	Rated Voltage (V _{AC})	Rated Frequency (Hz)	Rated Current (A)	Rated Torque (ft-lbs)	Max Acceleration Torque (ft-lbs)	CWT (%)	Sheave Diameter (in.)
TSM-3535-HV	3500	350	21.9	20	155	350	25.8	32.9	743	1858	50	17.32
TSM-3550-HV	3500	500	31.3	20	221	350	36.8	46.5	743	1858	50	17.32
TSM-5020-HV	5000	200	17.6	20	87	350	14.5	27.6	1061	2653	50	17.32
TSM-5035-HV	5000	350	31.3	20	155	350	25.8	46.9	1061	2653	50	17.32
TSM-5050-HV	5000	500	45	20	221	350	36.8	66.7	1061	2653	50	17.32

PLEASE USE THESE PAGES FOR ANY NON-STANDARD MATERIAL DETAILS

PLEASE USE THESE PAGES FOR ANY NON-STANDARD MATERIAL DETAILS

NOTES

NOTES



27685 Rockwalkin Ridge Rd.
Salisbury, MD 21801

1-855-890-6603
ManufacturingSales@DEMElevating.com

www.DEMElevating.com